

## NATURE INDEX PROFILE

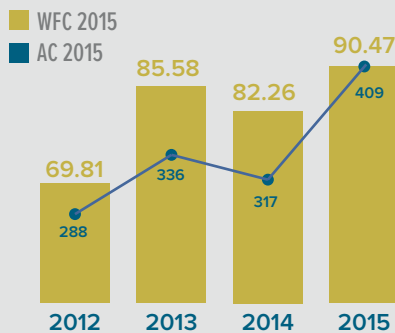
## THE UNIVERSITY OF SOUTHAMPTON

UNIVERSITY OF  
Southampton

People choose Southampton because of its reputation for changing the world for the better.

The University of Southampton (UoS) is in the top 1% of universities worldwide and is one of the UK's top 10 research universities. At Southampton, interdisciplinary bridges between a broad range of strong core disciplines drive original thinking, turn knowledge into action and impact, and create solutions to global challenges. Southampton has exceptional strengths across the physical sciences and engineering, oceanography and Earth sciences, biomedical sciences, social sciences and humanities.

## OUTPUT IN THE NATURE INDEX



## SUBJECT AREAS



## UOS IS STRONGEST IN PHYSICAL SCIENCES

Based on WFC 2015

## University of Southampton



WFC 2015: **90.47**  
AC 2015: **409**

Based on 2015 data in the 'overall' category

1182



the number of  
collaborating institutions

Based on papers in 2015

#4

RISING STAR  
in the United Kingdom

Based on absolute change in WFC 2012 - 2015



UoS collaborates most with  
institutions / companies in  
these 3 countries

Based on 2015 number of collaborations

## SOCIAL IMPACT

Widespread exploitation  
of the honeybee by early  
Neolithic farmers

JOURNAL:  
NATURE

PUBLISHED:  
NOVEMBER 2015



Date obtained 11/07/2016  
www.altmetric.com/details/4750261

## TOP 5 INTERNATIONAL COLLABORATORS



1. National Institute for Astrophysics (INAF) [10.68]
2. French National Centre for Scientific Research (CNRS) [10.08]
3. Max Planck Society [9.77]
4. Nanyang Technological University (NTU) [8.11]
5. California Institute of Technology (Caltech) [6.76]

By 2015 collaboration score

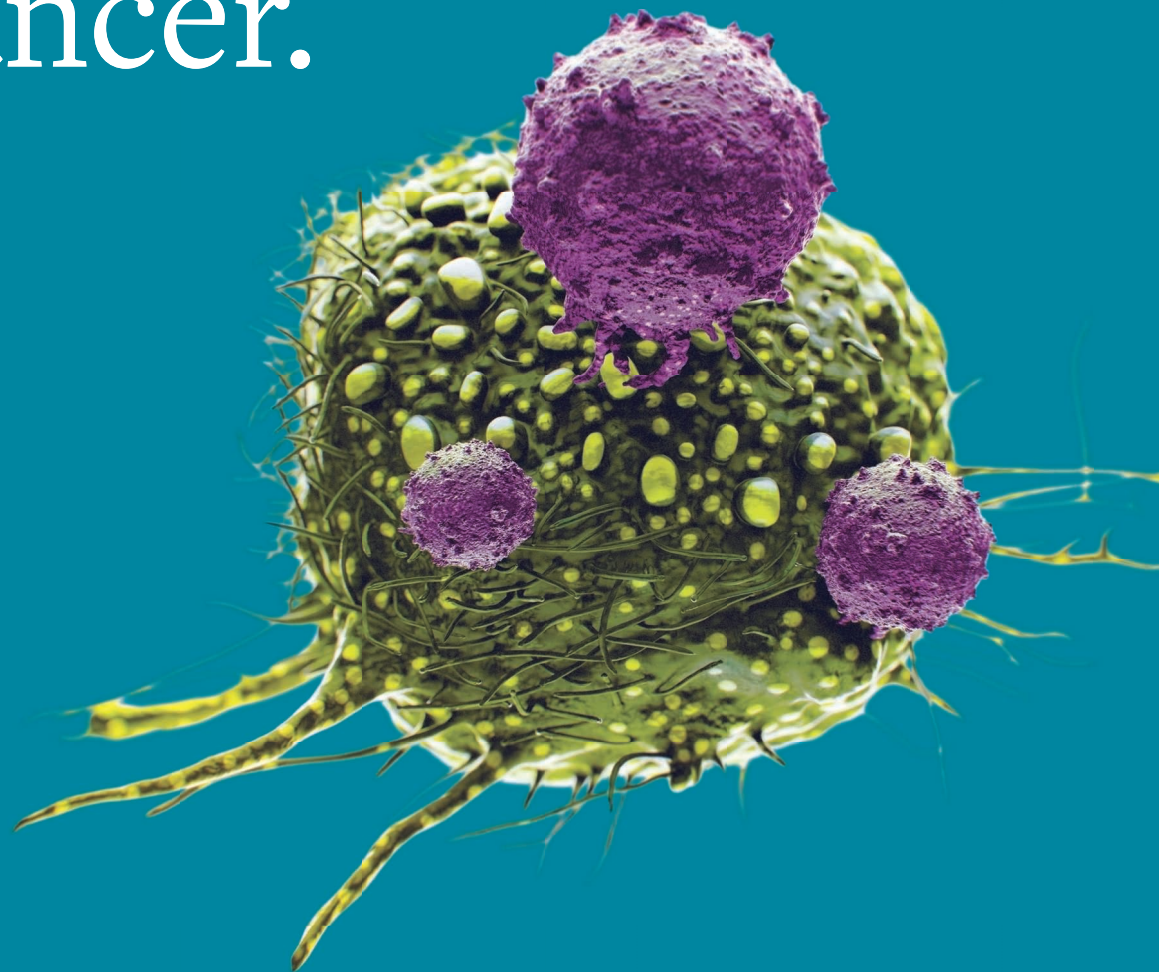
## CONTACT

University of Southampton  
University Road  
Southampton  
S017 1BJ  
United Kingdom



Tel. +44 (0)23 8059 5000  
www.southampton.ac.uk

We're recruiting  
your immune  
system in the war  
on cancer.



Search “Southampton research highlights”