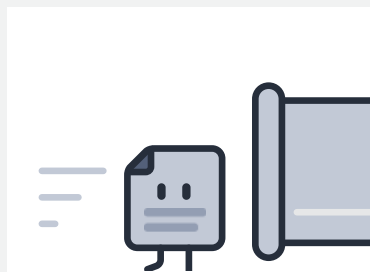


1.

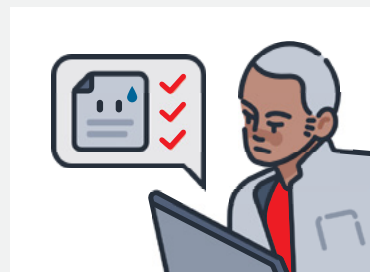
## SINGLE SUBMISSION



You submit your article just once. We will consider its suitability for three associated journals.\* For example, if you submit to *Nature Physics* your article will also be considered by *Nature Communications* and *Communications Physics*.

2.

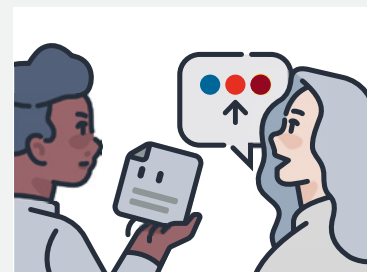
## INITIAL QUALITY CHECK



The article is evaluated by the editors for scientific merit and to ensure it is potentially suitable for publication in one of the three journals.

3.

## EDITORIAL ASSESSMENT



The editors will determine the most suitable journal and send it out for peer review. They produce an **Editorial Assessment Report**, giving:

- An editorial evaluation
- An assessment of the experimental framework with detailed feedback on how to increase the rigor and reproducibility of the research and align with open research practices
- Editorial guidance on navigating and interpreting the reviewer feedback
- Clear advice on the next steps to ensure further consideration of technically sound research
- The possibility of making the reviewer reports portable with other journals from other publishers, should publication be declined

4.

## DECISION



If your revised manuscript is accepted, following our usual rigorous editorial standards, your article will be published open access.

\*Journals that are part of the pilot:  
*Nature Physics*, *Nature Methods*, *Nature Genetics*,  
*Nature Communications*, *Communications Physics*,  
*Communications Biology*

**SPLIT APC 1:** An initial editorial assessment charge of €2,190 is due for all articles

**SPLIT APC 2:** Final top-up APC is due of €2,600 for *Nature*-branded journals, €800 for *Communications* journals