

AROUND THE PORTFOLIO

Around the portfolio: BDJ

Here we take a look at what's been published in our journal that you may have missed!

Oral lichen planus and lichenoid lesions – challenges and pitfalls for the general dental practitioner

Binnie R, Dobson M L, Chrystal A, Hijazi K. *Br Dent J* 2024; **236**: 285-292.

This article, which is the *BDJ*'s top accessed 2024 article to date, explores the challenges involved in recognition and management of patients with oral lichen planus (OLP). This condition is particularly challenging due to the diverse forms of presentation, potential malignant change, and monitoring requirements.

The authors provide detailed aetiology, clinical presentations, and suggested methods of diagnosis and management of OLP and oral lichenoid lesions (OLL). A helpful diagram is provided in Figure 5 showcasing a suggested management pathway for suspected OLP and OLL, and the frequency of monitoring intervals in both primary and secondary care are discussed.

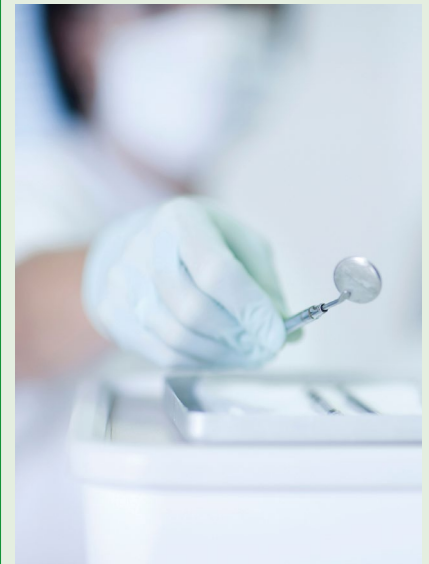
This is essential reading for GDPs as they are ideally placed to screen and be the first point of contact for patients with OLP and OLLs. Read the full Open Access article here: www.nature.com/articles/s41415-024-7063-y

Around the portfolio: BDJ Open

Here we take a look at what's been published in our fully Open Access journal that you may have missed!

Impact of dental visiting patterns on oral health: a systematic review of longitudinal studies

Khairuddin A N M, Bogale B, Kang J, Gallagher J E. *BDJ Open* 2024; DOI: 10.1038/s41405-024-00195-7.



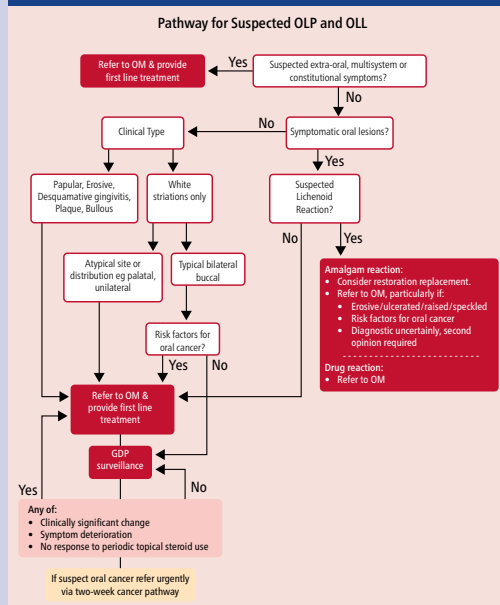
Most of us would assume that there is a positive relationship between going to the dentist and better oral health. However, finding the evidence for that has been surprisingly difficult. This is a systematic review which aims to do just that.

Although oral health, and oral health-related quality of life, were generally associated with increased dental attendance, this wasn't always the case according to the results. The review found, for example, that dental service utilisation did not have a significant influence on periodontal health status, and the results for tooth loss were mixed.

This is a good example of why systematic reviews are important to see the range of studies across a topic rather than relying on a single study. Read the full Open Access article here: www.nature.com/articles/s41405-024-00195-7

©Zero Creatives/Image Source/Getty Images Plus

Fig. 5 Management of OLP in primary dental care



Oral manifestations of long COVID and the views of healthcare professionals

Patel D, Louca C, Vargas C M. *Br Dent J* 2024; **236**: 111-116.

This article has proved very popular with readers, being shared widely on social media platforms with a relatively high Altmetric score of 35 already. Perhaps unsurprising as the article discusses signs of long COVID, which is still making headlines in a post-pandemic world.

The paper provides an overview of the oral manifestations that have been observed

in long COVID patients, including but not limited to dry mouth (xerostomia); loss of or changes to sense of taste; mouth sores; swollen or bleeding gums; and halitosis. The authors stress the importance of these signs/symptoms being recognised and reinforce the negative consequences of oral health not being integrated into the management of systemic conditions, despite the rapidly increasing recognition of the impact poor oral health has on the quality of life.

The full research methodology and results are free to view here: www.nature.com/articles/s41415-023-6715-7



Fig. 1 Clinical definitions of acute and long COVID