

Speciation & the origin of communities

Philippe Desjardins-Proulx¹²

¹College of Engineering, University of Illinois at Chicago, USA.

²Canada Research Chair on Terrestrial Ecosystems, Université du Québec, Canada.

June 23, 2011

Contents

1 Question & Objectives

1 Methodology

1 Results

4 Next ?

5 Epilogue

The big question

**What is the effect of speciation
on the structure of communities ?**

An attempt at integration: the neutral theory

An attempt at integration: the neutral theory

- Inspired by the theory of island biogeography.

An attempt at integration: the neutral theory

- Inspired by the theory of island biogeography.
- Highly influential (more than 2700 citations on GoogleScholar !).

An attempt at integration: the neutral theory

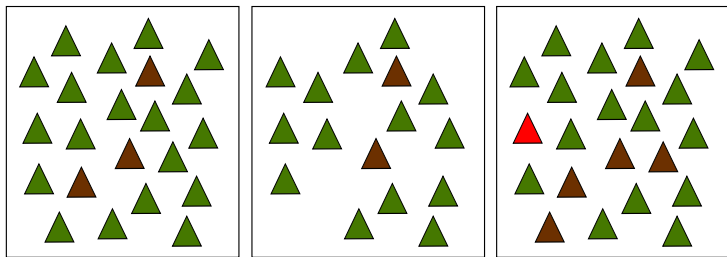
- Inspired by the theory of island biogeography.
- Highly influential (more than 2700 citations on GoogleScholar !).
- Emphasizes the role of drift, dispersal & speciation.

An attempt at integration: the neutral theory

- Inspired by the theory of island biogeography.
- Highly influential (more than 2700 citations on GoogleScholar !).
- Emphasizes the role of drift, dispersal & speciation.
- Ecological equivalence.

An attempt at integration: the neutral theory

- Inspired by the theory of island biogeography.
- Highly influential (more than 2700 citations on GoogleScholar !).
- Emphasizes the role of drift, dispersal & speciation.
- Ecological equivalence.



Speciation in the Neutral theory

problems with speciation in neutral ecology:

Speciation in the Neutral theory

Problems with speciation in neutral ecology:

- Behaves like a mutation (i.e.: instantaneous).

Speciation in the Neutral theory

Problems with speciation in neutral ecology:

- Behaves like a mutation (i.e.: instantaneous).
- The inhibiting effect of gene flow is ignored.

Speciation in the Neutral theory

Problems with speciation in neutral ecology:

- Behaves like a mutation (i.e.: instantaneous).
- The inhibiting effect of gene flow is ignored.
- ...not a population process.

Speciation in the Neutral theory

Problems with speciation in neutral ecology:

- Behaves like a mutation (i.e.: instantaneous).
- The inhibiting effect of gene flow is ignored.
- ...not a population process.

Primary objectives:

Speciation in the Neutral theory

Problems with speciation in neutral ecology:

- Behaves like a mutation (i.e.: instantaneous).
- The inhibiting effect of gene flow is ignored.
- ...not a population process.

Primary objectives:

- Seeing how far we can go with neutral ecology & speciation.

Speciation in the Neutral theory

Problems with speciation in neutral ecology:

- Behaves like a mutation (i.e.: instantaneous).
- The inhibiting effect of gene flow is ignored.
- ...not a population process.

Primary objectives:

- Seeing how far we can go with neutral ecology & speciation.
- The integration of a sound model of speciation in community ecology.

Speciation in the Neutral theory

Problems with speciation in neutral ecology:

- Behaves like a mutation (i.e.: instantaneous).
- The inhibiting effect of gene flow is ignored.
- ...not a population process.

Primary objectives:

- Seeing how far we can go with neutral ecology & speciation.
- The integration of a sound model of speciation in community ecology.
- Analyzing the effect of complex spatial structures on speciation.

Graphs

- Applications: Internet, social networks, data structures.

Graphs

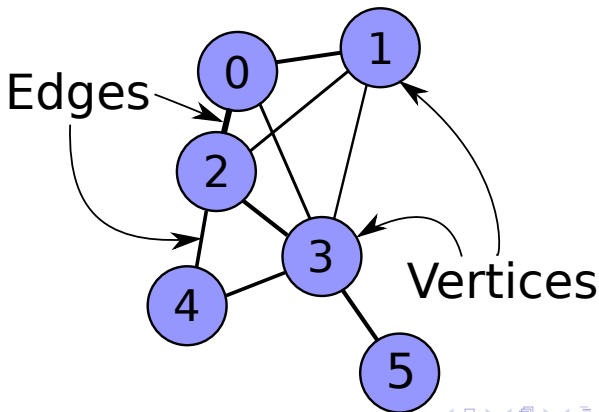
- Applications: Internet, social networks, data structures.
- In biology: brains, biochemical reactions, protein structures, phylogenetics, food webs.

Graphs

- Applications: Internet, social networks, data structures.
- In biology: brains, biochemical reactions, protein structures, phylogenetics, food webs.
- Mostly analyzed with algorithms.

Graphs

- Applications: Internet, social networks, data structures.
- In biology: brains, biochemical reactions, protein structures, phylogenetics, food webs.
- Mostly analyzed with algorithms.



Spatial graphs

Precedings : doi:10.1038/npre.2011.6054.1 : Posted 23 Jun 2011

Spatial graphs

- Used in conservation biology (Dale & Fortin, 2010).

Spatial graphs

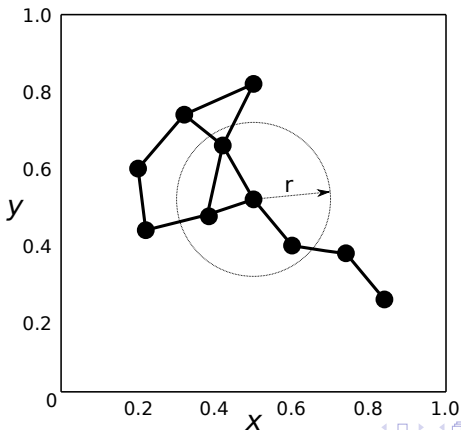
- Used in conservation biology (Dale & Fortin, 2010).
- Follow the principle of locality.

Spatial graphs

- Used in conservation biology (Dale & Fortin, 2010).
- Follow the principle of locality.
- Random geometric graphs (Penrose, 2003):

Spatial graphs

- Used in conservation biology (Dale & Fortin, 2010).
- Follow the principle of locality.
- Random geometric graphs (Penrose, 2003):



Our approach

Our approach

- The metacommunity as a graph of local communities.

Our approach

- The metacommunity as a graph of local communities.
- The graph is used to distinguish populations.

Our approach

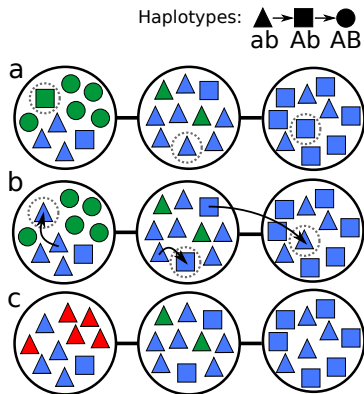
- The metacommunity as a graph of local communities.
- The graph is used to distinguish populations.
- Allopatric / parapatric speciation based on the BDM.

Our approach

- The metacommunity as a graph of local communities.
- The graph is used to distinguish populations.
- Allopatric / parapatric speciation based on the BDM.
- Implementation in C with algorithms to analyze the graphs.

Our approach

- The metacommunity as a graph of local communities.
- The graph is used to distinguish populations.
- Allopatric / parapatric speciation based on the BDM.
- Implementation in C with algorithms to analyze the graphs.



First results

Precedings : doi:10.1038/npre.2011.6054.1 : Posted 23 Jun

First results

- Almost no species unless selection is added.

First results

- Almost no species unless selection is added.
- Assumptions very favorable to speciation + selection required.

First results

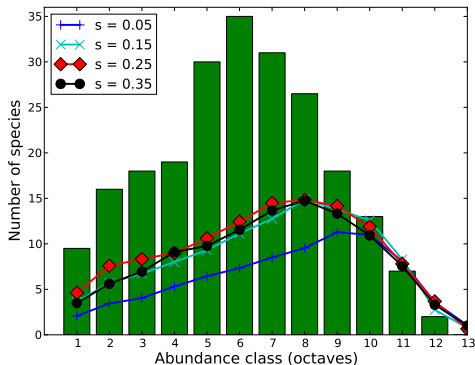
- Almost no species unless selection is added.
- Assumptions very favorable to speciation + selection required.
- Very hard to fit the BCI dataset.

First results

- Almost no species unless selection is added.
- Assumptions very favorable to speciation + selection required.
- Very hard to fit the BCI dataset.
- Complex relationship between the graph and diversity.

First results

- Almost no species unless selection is added.
- Assumptions very favorable to speciation + selection required.
- Very hard to fit the BCI dataset.
- Complex relationship between the graph and diversity.



Precedings : doi:10.1038/npre.2011.6054.1 : Posted 23 Jun
Text ?

Text ?

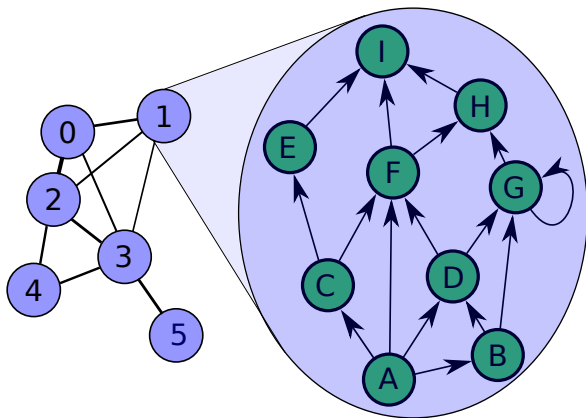
- A more flexible approach with graphs.

Text ?

- A more flexible approach with graphs.
- Speciation in spatial food webs (Dunne, 2006):

Text ?

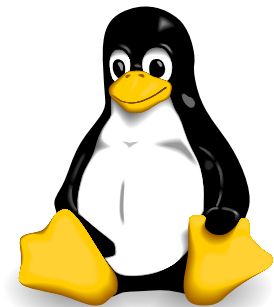
- A more flexible approach with graphs.
- Speciation in spatial food webs (Dunne, 2006):



Questions ?

Tools used

- Beamer (\LaTeX),
- Inkscape (Vector graphics),
- Geany (editor),
- ...and Linux !



M. R. T. Dale and M.-J. Fortin.

From graphs to spatial graphs.

Annu. Rev. Ecol. Evol. Syst., 41:21–38, 2010.

P. Desjardins-Proulx and D. Gravel.

How likely is speciation in neutral ecology ?

arXiv:1102.2634, 2011.

J. A. Dunne.

The network structure of food webs.

In M. Pascual and J. A. Dunne, editors, *Ecological Networks: Linking Structure to Dynamics in Food Webs*, pages 27–86. Oxford University Press, 2006.

E. P. Economo and T. H. Keitt.

Network isolation and local diversity in neutral metacommunities.

Oikos, 10:1–9, 2010.

S. P. Hubbell.

The unified neutral theory of biodiversity and biogeography,
volume 32 of *Monographs in population biology*.

Princeton University Press, 2001.

R. H. MacArthur and E. O. Wilson.

The theory of island biogeography.

Princeton University Press, 1967.

M. Newman.

Networks: An Introduction.

Oxford University Press, 2010.

M. Penrose.

Random geometric graphs.

Oxford University Press, 2003.

J. Rosindell, S. P. Hubbell, and R. S. Etienne.

The unified neutral theory of biodiversity and biogeography at age ten.

Trends Ecol. Evol., 26(7):340–348, 2011.