

ARTICLE

Received 10 Nov 2013 | Accepted 14 Mar 2014 | Published 14 Apr 2014

DOI: 10.1038/ncomms4653

OPEN

Contact of *cis*-Golgi with ER exit sites executes cargo capture and delivery from the ER

Kazuo Kurokawa¹, Michiyo Okamoto¹ & Akihiko Nakano^{1,2}

Protein transport from the endoplasmic reticulum (ER) to the Golgi apparatus is mediated by coat complex II (COPII) vesicles. It has been believed that COPII vesicles containing cargo are released from the ER exit sites (ERES) into the cytosol and then reach and fuse with the first post-ER compartment, *cis*-Golgi or ER-to-Golgi intermediate compartment (ERGIC). However, it still remains elusive how cargo loading to vesicles, vesicle budding, tethering and fusion are coordinated *in vivo*. Here we show, using extremely high speed and high resolution confocal microscopy, that the *cis*-Golgi in the budding yeast *Saccharomyces cerevisiae* approaches and contacts the ERES. The COPII coat cage then collapses and the *cis*-Golgi captures cargo. The *cis*-Golgi, thus loaded with cargo, then leaves the ERES. We propose that this ‘hug-and-kiss’ behaviour of *cis*-Golgi ensures efficient and targeted cargo transport from the ERES to *cis*-Golgi.

¹Live Cell Molecular Imaging Research Team, RIKEN Center for Advanced Photonics, 2-1 Hirosawa, Wako, Saitama 351-0198, Japan. ²Department of Biological Sciences, Graduate School of Science, The University of Tokyo, Hongo, Bunkyo-ku, Tokyo 113-0033, Japan. Correspondence and requests for materials should be addressed to K.K. (email: kkurokawa@riken.jp).

The basic mechanism of endoplasmic reticulum (ER)-Golgi traffic is conserved from yeast to higher animals and plants, but the number, size and dynamics of the ER exit sites (ERES) and Golgi vary across cell types and species^{1,2}. Most of the first post-ER compartments are located in the vicinity of the ERES. In *C. elegans*³, plant cells⁴ and also the yeast *P. pastoris*⁵, which have separate stacks of flattened cisternae in the cytoplasm, the *cis* face of Golgi stacks show stable association with the ERES. In mammalian cells, Golgi stacks are clustered and connected with each other, forming a large Golgi ribbon in the perinuclear region. However, ER-to-Golgi intermediate compartment (ERGIC) is found near the ERES, which locate not only in the perinuclear region but also on the ER spreading throughout the cell⁶.

The yeast *S. cerevisiae* presents a unique example. Specifically, individual Golgi cisternae, *cis*, medial and *trans*, do not stack but scatter in the cytoplasm^{7,8}. Our previous findings indicated that, among Golgi cisternae moving around in the cytoplasm, *cis*-Golgi has higher probability of staying in the vicinity of the ERES than *trans*-Golgi⁸. To understand the significance of this behaviour of yeast Golgi, we employed an extremely high speed and high resolution microscopy technique, super-resolution confocal live imaging microscopy (SCLIM), that we recently developed^{4,8,9}. ER-to-*cis*-Golgi and ER-to-ERGIC traffic has been believed to operate in a way that ER-derived COPII vesicles are once released into the cytosol and then get tethered to and fuse with neighbouring *cis*-Golgi or ERGIC^{10,11}. Our observations, including visualization of cargo, challenge this model. In *S. cerevisiae*, *cis*-Golgi approaches and contacts the ERES and, concomitantly with the collapse of COPII coats, captures cargo and then leaves the ERES.

Results

***cis*-Golgi shows approach-and-contact actions toward the ERES.** We first conducted simultaneous dual-colour time-lapse observation of the ERES and *cis*- and *trans*-Golgi cisternae. ERES is defined as the place where COPII coat assembles, and thus Sec13, a COPII outer coat protein, was tagged with green fluorescent protein (GFP) and used as an ERES marker. Sed5, a SNARE (soluble N-ethylmaleimide-sensitive factor attachment protein receptor) molecule residing mainly in the *cis*-Golgi^{12,13}, and Sec7, a guanine-nucleotide exchange factor for Arf GTPases primarily localizing in the *trans*-Golgi^{14,15}, were fused with monomeric red fluorescent protein (mRFP)¹⁶ and used as *cis*- and *trans*-Golgi markers, respectively. Sec13-GFP showed a typical organized feature of *S. cerevisiae* ERES with relatively stable localization^{8,17}, whereas Golgi cisternae were much more mobile^{7,8} (Fig. 1a). Simultaneous time-lapse observation of Sec13-GFP and mRFP-Sed5 indicated an interesting behaviour of *cis*-Golgi cisternae (Fig. 1a). *cis*-Golgi marked by mRFP-Sed5 showed repeated approach to the ERES and temporary association with it for a certain period of time (2–6 s). In contrast, the motion of *trans*-Golgi (Sec7-mRFP) looked random in relation to the ERES. They happened to pass by near the ERES, but no appreciable association was observed. Furthermore, we frequently observed a decrease in the fluorescence signal of Sec13-GFP, when *cis*-Golgi leaves the ERES after the association.

SCLIM is based on the combination of high-speed spinning-disk confocal scanning, ultrahigh-sensitivity detection and data processing. The thickness of the confocal plane in the spinning-disk method is 1–2 μm . To confirm that the temporary association between *cis*-Golgi and the ERES was indeed their contact and that the decrease in the COPII coat signal was real, we performed 3D dual-colour time-lapse observation. Figure 1b shows an example of projections of such 3D movies. Here, clearer

images indicate that *cis*-Golgi cisternae perform approach-and-contact actions (this behaviour can be likened to a ‘hug-and-kiss’) towards the ERES (note the merge of red and green signals) and then leave. Such intimate association was rarely observed between *trans*-Golgi and the ERES. As for the fluorescence signals of Sec13-GFP, Fig. 1b shows examples that they were significantly decreased. We made a statistical analysis for the changes of Sec13-GFP signals after the contact with Golgi cisternae (Fig. 1c). Because the fluorescence signals fluctuate, there were always random increase and decrease, but the case of *cis*-Golgi showed a clear bias towards the decrease as compared with *trans*-Golgi (see also Supplementary Movies 1 and 2).

***cis*-Golgi is stuck at the ERES when secretion is compromised.**

We next asked whether the ‘hug-and-kiss’ action of *cis*-Golgi to the ERES was affected when secretion was compromised. Glucose deprivation has been known to impair protein secretion in *S. cerevisiae* and cause slowing down of Golgi cisternal maturation and coalescence of the ERES¹⁸. 3D images of glucose-deprived cells showed that the proportion of *cis*-Golgi cisternae associated with the ERES increased ($26 \pm 10\%$ with glucose and $63 \pm 23\%$ without glucose (mean \pm s.d.)), whereas *trans*-Golgi remained mostly separate from the ERES ($7 \pm 8\%$ with glucose and $4 \pm 8\%$ without glucose) (Fig. 2a,b). 3D time-lapse images of mRFP-Sed5 and Sec13-GFP in glucose-deprived cells demonstrated that *cis*-Golgi cisternae were largely stuck at the ERES and the Sec13-GFP signal did not decrease (Fig. 2c). Persistent contact between *cis*-Golgi and the ERES was also observed in cells treated with cycloheximide to block protein synthesis (Fig. 3).

***cis*-Golgi is stuck at the ERES in tether-impaired cells.**

Biochemical studies have revealed that the directionality of traffic from the ER to the Golgi is controlled by the sequential interactions between COPII coats and tethering factors^{19,20}. The tethering complex TRAPPI contains the activity as the guanine-nucleotide exchange factor for Ypt1 and binds to Sec23. TRAPPI activates Ypt1 thereby inducing binding between Ypt1 and its effector Uso1, a long coiled-coil tethering protein localizing on the Golgi membrane. Subsequently, the protein kinase Hrr25 (ref. 21) localizing on the Golgi phosphorylates Sec23/24 complex, which facilitates shedding of COPII coats. This suggests that COPII coats are not removed from the membrane until reaching the Golgi membrane. We examined the relationship between the ERES and *cis*-Golgi in the *uso1-1* cells, which lack the Uso1 tethering function at the restrictive temperature (37°C)²². As shown in Fig. 4, under this condition, *cis*-Golgi stayed associated with the ERES ($17 \pm 12\%$ at 25°C and $47 \pm 16\%$ at 37°C) (Fig. 4a,b) without invoking the decrease in Sec13-GFP signals (Fig. 4c). *trans*-Golgi was still freely moving in the cytoplasm ($5 \pm 6\%$ at 25°C and $4 \pm 5\%$ at 37°C) (Fig. 4c). Taken together, these findings suggest that COPII coats are released only when normal functions of Uso1 and other transport machinery are fulfilled.

Cargo is transiently loaded into the ERES. Our data imply an intriguing possibility that *cis*-Golgi captures cargo at the ERES via the hug-and-kiss action. Live cell visualization of cargo transport along the secretory pathway had been a big challenge, but we succeeded in setting up a system to do so. We chose a GFP-tagged cargo Axl2-GFP, a transmembrane protein targeted to the plasma membrane of the bud tip²³, and expressed it under a heat-shock promoter (*SSA1*)²⁴ in the temperature-sensitive *sec31-1* mutant. The *sec31-1* mutant is defective in the assembly of the Sec31 coat at the restrictive temperature (39°C). At this temperature, new synthesis of Axl2-GFP was induced but the COPII budding was

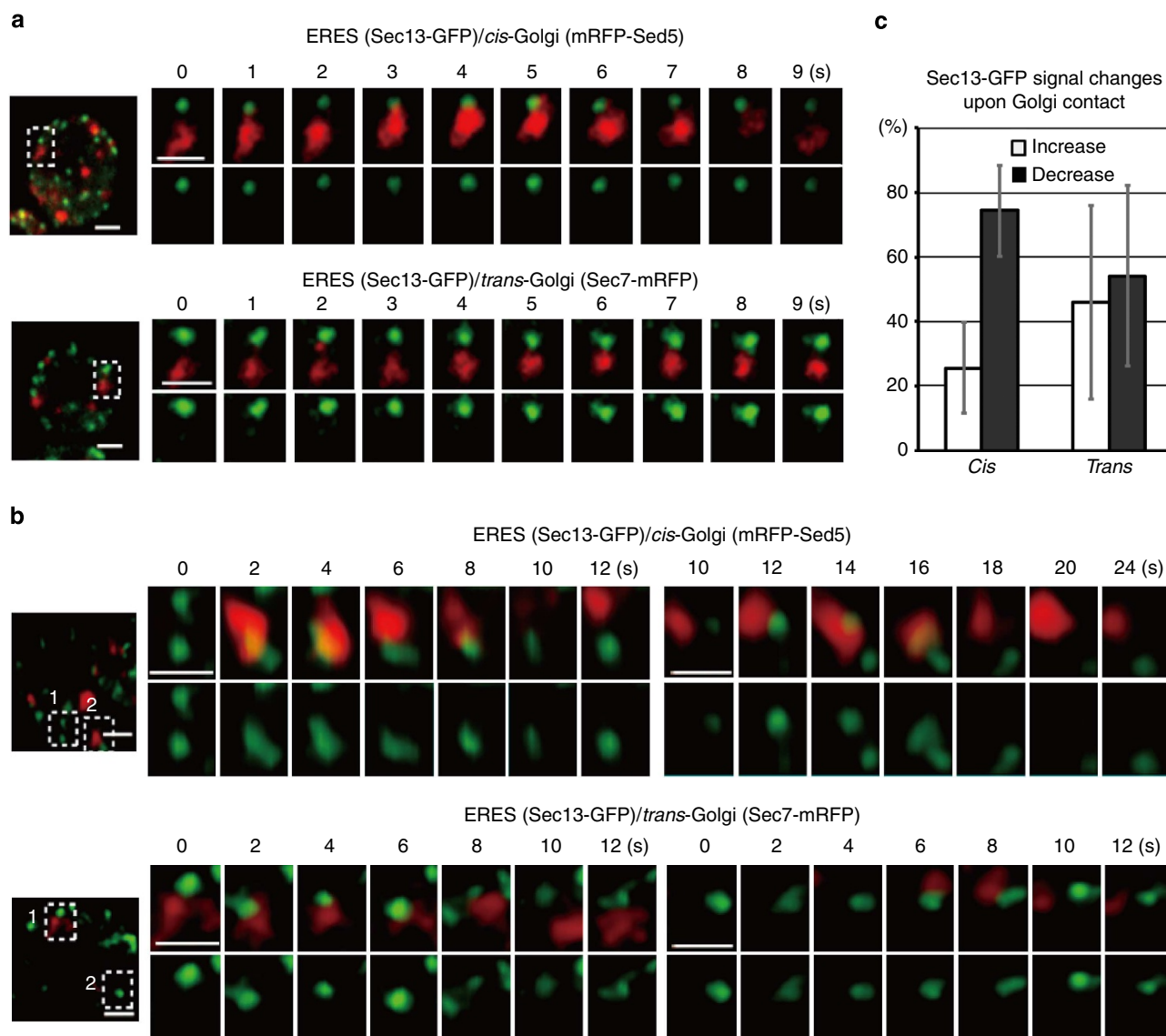


Figure 1 | *cis*-Golgi shows approach-and-contact actions towards the ERES. Wild-type cells expressing Sec13-GFP (COPII coat protein, green) with mRFP-Sed5 (*cis*-Golgi, red) and Sec7-mRFP (*trans*-Golgi, red) were observed with SCLIM. **(a)** Behaviours of *cis*-Golgi ($n = 21$ from 14 cells) and *trans*-Golgi ($n = 48$ from 28 cells). Representative two-dimensional (2D) images are shown on the left. Right panels show time-lapse images (one frame per second) of boxed areas. Scale bar, 1 μ m. **(b)** Seven optical slices 0.1 μ m apart around the centre of cells were taken at 0.15-s intervals. Three-dimensional (3D) images were reconstructed into movies (Supplementary Movies 1 and 2), of which representative views (boxed areas) are shown in the right panels. Scale bar, 1 μ m. **(c)** Sec13-GFP signal changes on the contact of *cis*- and *trans*-Golgi are shown (*cis*-Golgi, $n = 113$ from 13 cells; *trans*-Golgi, $n = 122$ from 33 cells).

blocked. Thus, the cargo Axl2-GFP accumulated in the ER of these cells (Fig. 5a, upper panel). On temperature shift-down to 25 °C, the cells were restored from the COPII-budding block and Axl2-GFP, whose new synthesis was repressed, started export from the ER and went on to the Golgi (Fig. 5a, lower panel). Cargo loading into the ERES was observed in *sec31-1* cells expressing heat-shock-induced Axl2-GFP and constitutive Sec13-mRFP (Fig. 5b). Two-dimensional time-lapse images showed that a small portion of cargo was loaded into the ERES on release from the COPII-budding block; the cargo signal then disappeared from the ERES coincidentally with a decrease in the signal of Sec13-mRFP (Fig. 5b,c).

***cis*-Golgi captures cargo at the ERES.** To visualize the behaviour of cargo in relation to ERES-to-Golgi transport, we next examined *sec31-1* cells that constitutively expressed Mnn9-mCherry,

a subunit of Golgi mannosyltransferase complex that localizes mainly in *cis*-Golgi²⁵ tagged with mCherry²⁶, and the heat-shock-inducible Axl2-GFP. After the temperature shift to 25 °C, Axl2-GFP was exported from the ER to the Mnn9-mCherry-labelled *cis*-Golgi (Fig. 6a, left panels). 2D and 3D time-lapse images of Mnn9-mCherry and Axl2-GFP demonstrate that *cis*-Golgi began to associate with a particular region of the ER, most probably the ERES, and captured cargo. Then the *cis*-Golgi left the ER together with the cargo (Fig. 6a,b, and Supplementary Movies 3–5).

Discussion

Our data have clearly demonstrated that yeast *cis*-Golgi contacts the ERES, by what we would call a hug-and-kiss action, and captures cargo during this contact (see Fig. 7 for our model). Our findings suggest that COPII vesicle do not necessarily have to be

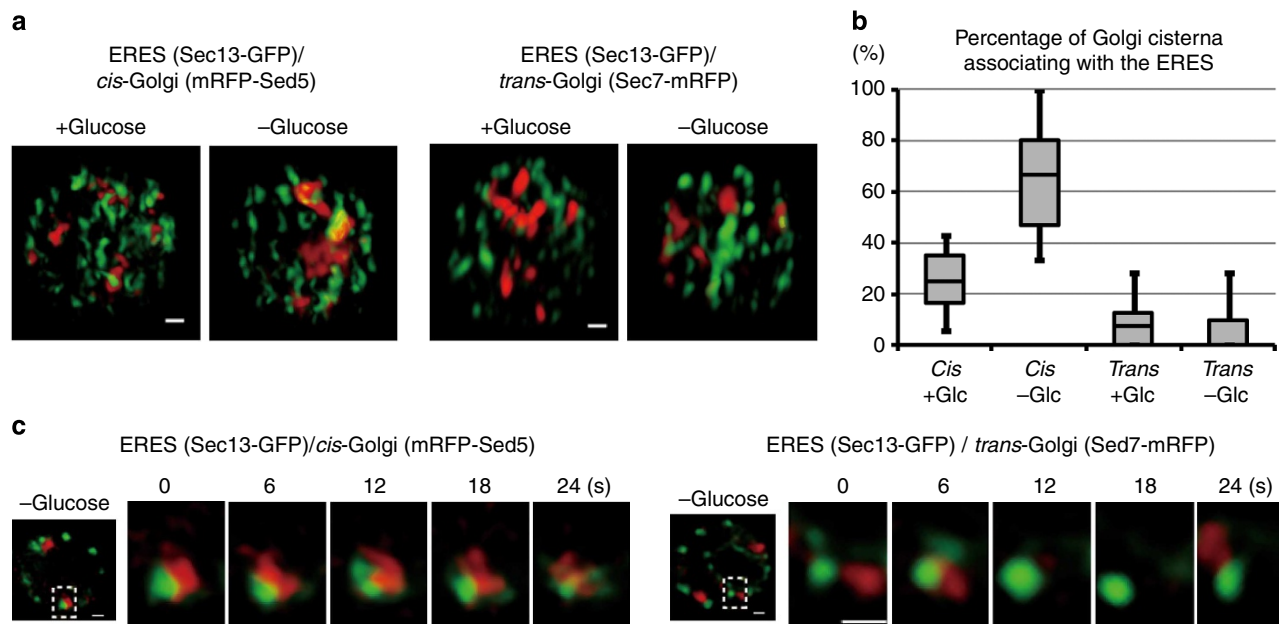


Figure 2 | *cis*-Golgi is stuck at the ERES when secretion is compromised. Wild-type cells expressing Sec13-GFP (COPII coat protein, green) and mRFP-Sed5 (*cis*-Golgi, red) or Sec7-mRFP (*trans*-Golgi, red) were grown to a mid-log phase. Culture was changed to a fresh medium with or without glucose (Glc). Image acquisition started 5 min after the medium change. **(a)** Representative 3D images of a whole cell. **(b)** The percentages of *cis*- or *trans*-Golgi associating with the ERES are shown in a box plot. The horizontal line in each box represents the median value of the distribution. The boundaries of a box represent the lower and upper quartile values. The whiskers extending vertically from the lower and upper portions of each box represent the extent of the rest of the data. (*cis*-Golgi, $n = 243$ from 19 cells with glucose and $n = 222$ from 35 cells without glucose; *trans*-Golgi, $n = 239$ from 24 cells with glucose and $n = 209$ from 31 cells without glucose). **(c)** Seven optical slices $0.1\mu\text{m}$ apart around the centre of cells were taken at 0.15-s intervals. Representative 3D time-lapse images of an ERES and *cis*-Golgi or *trans*-Golgi (boxed areas) in glucose-deprived cells are shown.

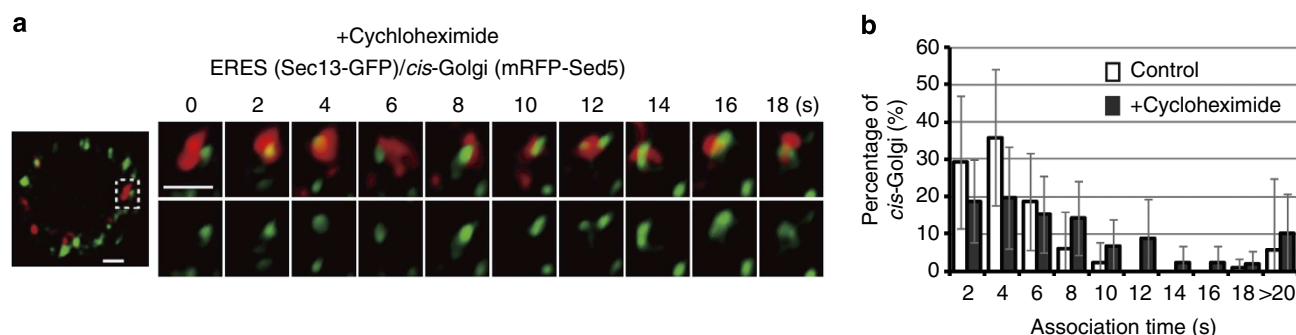


Figure 3 | Persistent contact between *cis*-Golgi and the ERES in cells treated with cycloheximide. Wild-type cells expressing Sec13-GFP (COPII coat protein, green) and mRFP-Sed5 (*cis*-Golgi, red) were grown to a mid-log phase and then treated with $100\mu\text{g ml}^{-1}$ cycloheximide for 30 min. **(a)** Seven optical slices $0.1\mu\text{m}$ apart around the centre of cells were taken at 0.15-s intervals. Representative 3D time-lapse images of an ERES and *cis*-Golgi (boxed areas) in glucose-deprived cells are shown. **(b)** Contact time between Sec13-GFP (COPII coat protein) and mRFP-Sed5 (*cis*-Golgi) in cells treated with or without cycloheximide (control, $n = 72$ from 12 cells; with cycloheximide, $n = 155$ from 12 cells).

released into the cytosol. They can be captured by *cis*-Golgi before the release. This mechanism appears to be much safer than forming many free COPII vesicles in the cytosol and also explains why COPII vesicles are not easily found in electron micrographs of normally grown cells. Of course we do not rule out the possibility that free COPII vesicles are released and the *cis*-Golgi just immediately captures them. Previous examples of close association between the ERES and the Golgi have been known for invertebrates, plants and budding yeast *P. pastoris*, in which COPII vesicles are captured by the Golgi quickly after release^{3–5}. Even with mammalian cells, an elaborate EM study previously showed that the ERES and the vesicular tubular cluster (ERGIC) are organized in a highly specialized zone and suggested that COPII vesicles were tethered as they formed²⁷. The mechanism we are proposing ensures efficient and targeted ER-Golgi cargo

transport even in the species like *S. cerevisiae* that does not have highly organized Golgi structures.

Secretory cargoes vary in size; therefore, some cargo proteins, such as procollagen fibres in mammalian cells, are too large to load into conventional COPII vesicles, and oversized vesicles have been postulated to generate to accommodate secretion of such large cargoes^{28,29}. The oversized COPII vesicles may not have to be sealed and released if our proposed mechanism operates. A big question remains how the *cis*-Golgi finds the ERES. Actin and microtubule cytoskeletons probably do not play a role here, because *cis*-Golgi in *S. cerevisiae* moves independently of these cytoskeletons. Some matrix-like protein might stabilize the interaction between the ERES and the *cis*-Golgi. TFG protein of *C. elegans* and mammals is an interesting candidate^{3,30}, but yeast does not seem to have its close homologue. Tethers such as the

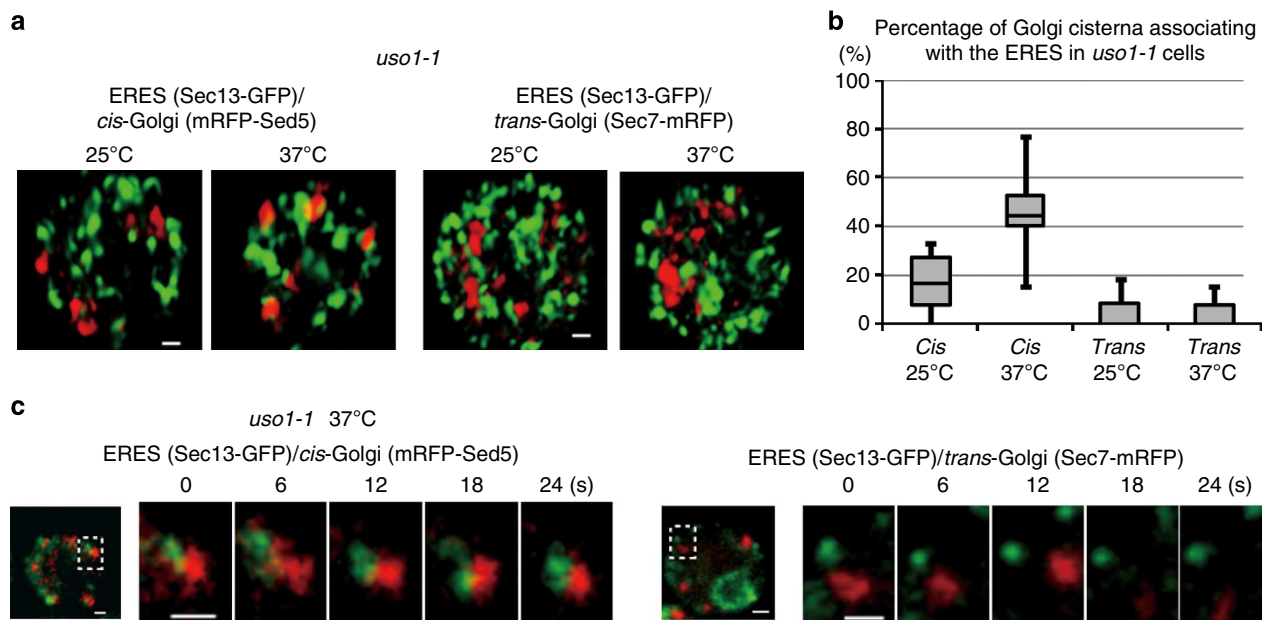


Figure 4 | *cis*-Golgi is stuck at the ERES when *Uso1* function is impaired. *uso1-1* cells expressing Sec13-GFP (COPII coat protein, green) and mRFP-Sed5 (*cis*-Golgi, red) or Sec7-mRFP (*trans*-Golgi, red) were cultured at permissive (25 °C) or restrictive (37 °C) temperature for 30 min. **(a)** Representative 3D images of a whole cell are shown. **(b)** The percentages of *cis*- or *trans*-Golgi associating with the ERES are shown in a box plot. The horizontal line in each box represents the median value of the distribution. The boundaries of a box represent the lower and upper quartile values. The whiskers extending vertically from the lower and upper portions of each box represent the extent of the rest of the data (*cis*-Golgi, $n = 250$ from 19 cells at 25 °C and $n = 209$ from 18 cells at 37 °C; *trans*-Golgi, $n = 217$ from 20 cells at 25 °C and $n = 141$ from 15 cells at 37 °C). **(c)** Representative 2D time-lapse images of an ERES and *cis*-Golgi or *trans*-Golgi (boxed areas) in cells at the restrictive temperature are shown. Scale bar, 1 μ m **(a,c)**.

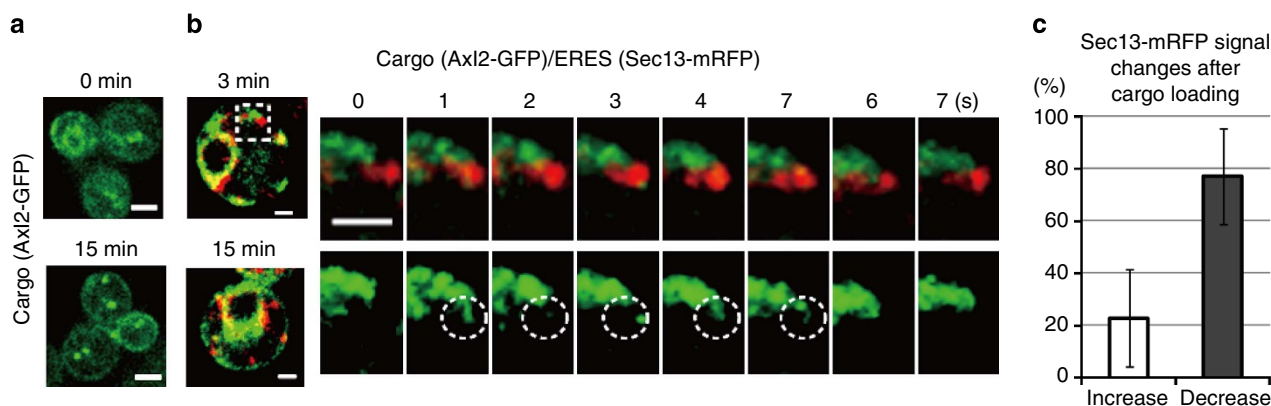


Figure 5 | Cargo is transiently loaded into the ERES. **(a)** When cultured at 39 °C for 30 min, *sec31-1* cells harbouring the *AXL2-GFP* gene under the control of the heat-shock promoter (*SSA1*) had induced synthesis of Axl2-GFP (0 min). COPII budding was blocked at 39 °C because of the *sec31-1* temperature-sensitive mutation. On temperature shift-down to 25 °C on the microscopic stage, cells were released from the COPII-budding block and Axl2-GFP began to be exported from the ER and went on to the Golgi apparatus (15 min). Scale bar, 2 μ m. **(b)** *sec31-1* cells expressing heat-shock-inducible Axl2-GFP (cargo, green) and constitutive Sec13-mRFP (COPII coat, red) were released from the COPII-budding block and then imaged (left panels). Representative 2D time-lapse images of Axl2-GFP and an ERES (boxed areas) are shown in the upper right panels. Dotted circle indicates Axl2-GFP co-localizing with the ERES. The lower right panels are high-contrasted images to show the small amount of Axl2-GFP. Scale bar, 1 μ m. **(c)** Sec13-mRFP signal changes after Axl2-GFP loading into the ERES ($n = 91$ from 20 puncta of Sec13-mRFP in 12 cells).

TRAPPI complex and *Uso1* are intriguing players that could guide the *cis*-Golgi to the ERES, and if so the word ‘hug’ would be appropriate. The functions of these tethers in hug-and-kiss actions will of course be a target of our future studies.

We previously demonstrated that yeast Golgi cisternae mature over time; the *cis*-Golgi changes its nature via medial-Golgi to *trans*-Golgi^{7,31}. An interesting question would be whether the *cis*-Golgi approaching the ERES goes into the maturation phase immediately after contact. In the glucose deprivation experiment (Fig. 3), a certain fraction of *cis*-Golgi was left unassociated with

ERES, even though there are more ERES than *cis*-Golgi in number⁸. This might be because there are two populations of *cis*-Golgi, one for capture of cargo from the ERES (hug-and-kiss) and the other for carbohydrate modification (maturation). The former *cis*-Golgi could be regarded as similar to the mammalian ERGIC. Recent studies on plant Golgi support this view^{4,32}. We have already made a substantial progress towards simultaneous multicolour observation at high-speed and super-high-resolution⁹ and will fully utilize it to address these and other unresolved questions by live cell imaging.

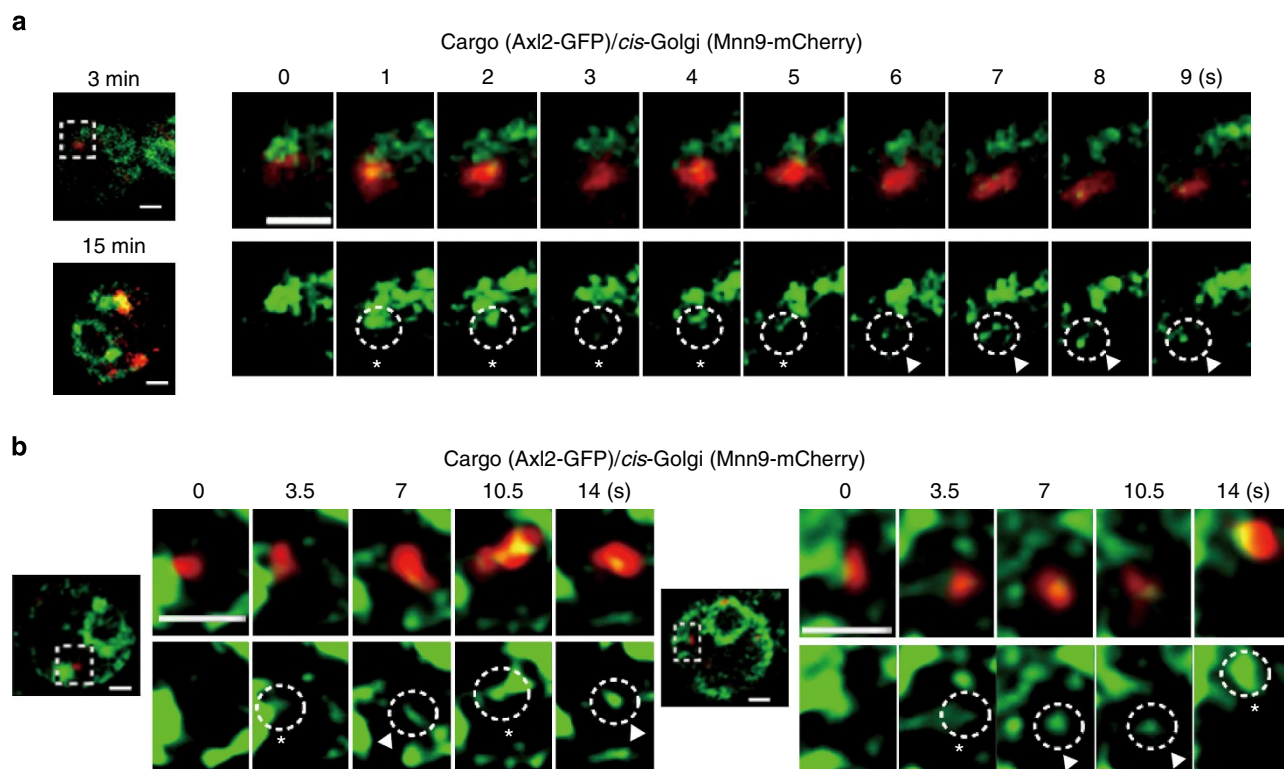


Figure 6 | cis-Golgi captures cargo at the ERES. *sec31-1* cells expressing heat-shock-inducible Axl2-GFP (cargo, green) and constitutive Mnn9-mCherry (*cis*-Golgi, red) were released from the COPII-budding block and then imaged. **(a)** Axl2-GFP is partly co-localized with *cis*-Golgi (left panels). Right panels show representative 2D time-lapse images of Axl2-GFP and *cis*-Golgi (boxed area). **(b)** 3D images were reconstructed from 15 optical slices 0.1 μ m apart around the centre of cells taken at 0.2-s intervals (left panels). Right panels show representative 3D time-lapse images of Axl2-GFP and *cis*-Golgi (boxed areas). Dashed circles, Axl2-GFP contained in *cis*-Golgi. Asterisks, Axl2-GFP captured by *cis*-Golgi. Arrowheads, Axl2-GFP leaving from the ER together with *cis*-Golgi. The lower panels are high-contrasted images to show the small amount of Axl2-GFP. Scale bar, 1 μ m (**a,b**).

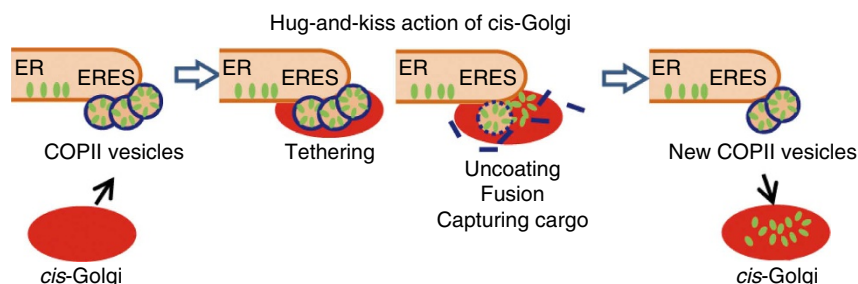


Figure 7 | A model of ER-Golgi cargo transport by a 'hug-and-kiss' action of cis-Golgi. The ERES localizes on high-curvature ER domains such as on ER tubules or at the edge of ER sheets, and cargo protein (green) synthesized in the ER is loaded into the ERES. *cis*-Golgi (red large ellipse) performs an approach-and-contact (hug-and-kiss) action towards the ERES. During contact between COPII buds/vesicles and *cis*-Golgi, the COPII coat (blue line) cage collapses. *cis*-Golgi that received cargo then leaves the ERES.

Methods

Yeast strains, plasmids and culture conditions. Yeast cells were grown in MCD medium (0.67% yeast nitrogen base without amino acids (Difco Laboratories), 0.5% casamino acids (Difco Laboratories) and 2% glucose) with appropriate supplements. For live imaging, cells were grown to a mid-log phase at 25 °C. Strains expressing fluorescent protein-tagged Sec13, Mnn9 were constructed by a PCR-based method using pFA6a plasmids as a template, which is described in the yeast GFP database at the University of California, San Francisco³³ (primers 5'-TTTATGGAAGGAAAATCTTGAGGGTAAATGGGAACCCGCTGGTGAAGTTCATCAGCGGATCCCCGGGTAAATTAA-3' and 5'-CTCATTGTCATCTCTTTTCTTTGAGATGTTTCATTTTAAATCTTGATACTCTGAATTCGAGCTCGTTTAAAC-3' for Sec13 and primers 5'-ATTGGCTTACCAAATATTGGTTTATCACATAGAGGAAGAGAACCATCGGATCCCCGGGTAAATTAA-3' and 5'-ATTATCTTTCAATAACGCTATAGCTTCTGTATGCTTTTTCCTCAGTTGCGAATTCGAGCTCGTTTAAAC-3' for Mnn9). mRFP-Sec5 was expressed under the control of the *TDH3* promoter on the low-copy plasmid pRS316 (ref. 34). Sec7-mRFP was expressed similarly except that the *ADH1* promoter was used instead of the *TDH3* promoter. Axl2-GFP was expressed

under the control of a heat-shock promoter on the low-copy plasmid pRS316 or on the integrated plasmid pRS304.

Fluorescence microscopy. Cells were immobilized on glass slides using concanavalin A and imaged by SCLIM. SCLIM was developed by combining an Olympus model IX-71 inverted fluorescence microscope with a UPlanSApo $\times 100$ NA 1.4 objective lens (Olympus, Japan), a high-speed and high-signal-to-noise-ratio spinning-disk confocal scanner (Yokogawa Electric, Japan), a custom-made spectroscopic unit, image intensifiers (Hamamatsu Photonics, Japan) equipped with a custom-made cooling system and two EM-CCD cameras (Hamamatsu Photonics, Japan) for green and red observation⁹. For raising space resolution, a magnification lens (4 or $\times 10$) was put in the light path between the confocal scanner and the spectroscopic unit. For 3D images, we collected optical sections spaced 0.1 μ m apart in stacks by oscillating the objective lens vertically with custom-made piezo actuator (Yokogawa Electric) relative to sample planes. Typically, 80 optical sections could span whole cells. For 3D time-lapse images, we took sequential 7 or 15 optical sections around the centre of a cell. Velocity

software (Perkin Elmer, MA) was used to reconstruct and deconvolve 3D images via point-spread functions optimized for our spinning-disk confocal scanner. MetaMorph software (Molecular Devices, CA) was used for showing time-lapse images and for fluorescence signal change analysis. A thermo-controlled stage (Tokai Hit, Japan) was used to observe temperature-sensitive mutants.

References

- Sato, K. & Nakano, A. Mechanisms of COPII vesicle formation and protein sorting. *FEBS Lett.* **581**, 2076–2082 (2007).
- Brandizzi, F. & Barlowe, C. Organization of the ER-Golgi interface for membrane traffic control. *Nat. Rev. Mol. Cell. Biol.* **14**, 382–392 (2013).
- Witte, K. *et al.* TFG-1 function in protein secretion and oncogenesis. *Nat. Cell Biol.* **13**, 550–558 (2011).
- Ito, Y. *et al.* cis-Golgi proteins accumulate near the ER exit sites and act as the scaffold for Golgi regeneration after brefeldin A treatment in tobacco BY-2 cells. *Mol. Biol. Cell* **23**, 3203–3214 (2012).
- Bevis, B. J., Hammond, A. T., Reinke, C. A. & Glick, B. S. *De novo* formation of transitional ER sites and Golgi structures in *Pichia pastoris*. *Nat. Cell Biol.* **4**, 750–756 (2002).
- Budnik, A. & Stephens, D. J. ER exit sites—localization and control of COPII vesicle formation. *FEBS Lett.* **583**, 3796–3803 (2009).
- Matsuura-Tokita, K., Takeuchi, M., Ichihara, A., Mikuriya, K. & Nakano, A. Live imaging of yeast Golgi cisternal maturation. *Nature* **441**, 1007–1010 (2006).
- Okamoto, M. *et al.* High-curvature domains of the ER are important for the organization of ER exit sites in *Saccharomyces cerevisiae*. *J. Cell Sci.* **125**, 3412–3420 (2012).
- Kurokawa, K., Ishii, M., Suda, Y., Ichihara, A. & Nakano, A. Live cell visualization of Golgi membrane dynamics by super-resolution confocal live imaging microscopy. *Methods Cell Biol.* **118**, 235–242 (2013).
- Cao, X., Ballew, N. & Barlowe, C. Initial docking of ER-derived vesicles requires Usa1p and Ypt1p but is independent of SNARE proteins. *EMBO J.* **17**, 2156–2165 (1998).
- Lord, C., Ferro-Novick, S. & Miller, E. A. The highly conserved COPII coat complex sorts cargo from the endoplasmic reticulum and targets it to the golgi. *Cold Spring. Harb. Perspect. Biol.* **5** pii a013367 (2013).
- Hardwick, K. G. & Pelham, H. R. SED5 encodes a 39-kD integral membrane protein required for vesicular transport between the ER and the Golgi complex. *J. Cell Biol.* **119**, 513–521 (1992).
- Wooding, S. & Pelham, H. R. The dynamics of golgi protein traffic visualized in living yeast cells. *Mol. Biol. Cell.* **9**, 2667–2680 (1998).
- Achstetter, T., Franzusoff, A., Field, C. & Schekman, R. SEC7 encodes an unusual, high molecular weight protein required for membrane traffic from the yeast Golgi apparatus. *J. Biol. Chem.* **263**, 11711–11717 (1988).
- Sata, M., Donaldson, J. G., Moss, J. & Vaughan, M. Brefeldin A-inhibited guanine nucleotide-exchange activity of Sec7 domain from yeast Sec7 with yeast and mammalian ADP ribosylation factors. *Proc. Natl Acad. Sci. USA* **95**, 4204–4208 (1998).
- Campbell, R. E. *et al.* A monomeric red fluorescent protein. *Proc. Natl Acad. Sci. USA* **99**, 7877–7882 (2002).
- Shindapina, P. & Barlowe, C. Requirements for transitional endoplasmic reticulum site structure and function in *Saccharomyces cerevisiae*. *Mol. Biol. Cell* **21**, 1530–1545 (2010).
- Levi, S. K., Bhattacharyya, D., Strack, R. L., Austin, 2nd J. R. & Glick, B. S. The yeast GRASP Grh1 colocalizes with COPII and is dispensable for organizing the secretory pathway. *Traffic* **11**, 1168–1179 (2010).
- Cai, H. *et al.* TRAPPI tethers COPII vesicles by binding the coat subunit Sec23. *Nature* **445**, 941–944 (2007).
- Lord, C. *et al.* Sequential interactions with Sec23 control the direction of vesicle traffic. *Nature* **473**, 181–186 (2011).
- Murakami, A., Kimura, K. & Nakano, A. The inactive form of a yeast casein kinase I suppresses the secretory defect of the sec12 mutant. Implication of negative regulation by the Hrr25 kinase in the vesicle budding from the endoplasmic reticulum. *J. Biol. Chem.* **274**, 3804–3810 (1999).
- Nakajima, H. *et al.* A cytoskeleton-related gene, *uso1*, is required for intracellular protein transport in *Saccharomyces cerevisiae*. *J. Cell Biol.* **113**, 245–260 (1991).
- Roemer, T., Madden, K., Chang, J. & Snyder, M. Selection of axial growth sites in yeast requires Axl2p, a novel plasma membrane glycoprotein. *Genes Dev.* **10**, 777–793 (1996).
- Nakamoto, R. K., Rao, R. & Slayman, C. W. Expression of the yeast plasma membrane [H⁺ +]ATPase in secretory vesicles. A new strategy for directed mutagenesis. *J. Biol. Chem.* **266**, 7940–7949 (1991).
- Jungmann, J. & Munro, S. Multi-protein complexes in the cis Golgi of *Saccharomyces cerevisiae* with alpha-1,6-mannosyltransferase activity. *EMBO J.* **17**, 423–434 (1998).
- Shu, X., Shaner, N. C., Yarbrough, C. A., Tsien, R. Y. & Remington, S. J. Novel chromophores and buried charges control color in mFruits. *Biochemistry* **45**, 9639–9647 (2006).
- Bannykh, S. I., Rowe, T. & Balch, W. E. The organization of endoplasmic reticulum export complexes. *J. Cell Biol.* **135**, 19–35 (1996).
- Saito, K. *et al.* TANGO1 facilitates cargo loading at endoplasmic reticulum exit sites. *Cell* **136**, 891–902 (2009).
- Jin, L. *et al.* Ubiquitin-dependent regulation of COPII coat size and function. *Nature* **482**, 495–500 (2012).
- Beetz, C. *et al.* Inhibition of TFG function causes hereditary axon degeneration by impairing endoplasmic reticulum structure. *Proc. Natl Acad. Sci. USA* **110**, 5091–5096 (2013).
- Losev, E. *et al.* Golgi maturation visualized in living yeast. *Nature* **441**, 1002–1006 (2006).
- Donohoe, B. S. *et al.* Cis-Golgi cisternal assembly and biosynthetic activation occur sequentially in plants and algae. *Traffic* **14**, 551–567 (2013).
- Huh, W. K. *et al.* Global analysis of protein localization in budding yeast. *Nature* **425**, 686–691 (2003).
- Sato, K., Sato, M. & Nakano, A. Rer1p, a retrieval receptor for endoplasmic reticulum membrane proteins, is dynamically localized to the Golgi apparatus by coatamer. *J. Cell Biol.* **152**, 935–944 (2001).

Acknowledgements

We thank all the members of live Cell Imaging Research Team of RIKEN for valuable discussion and help. This work was supported by Grants-in-Aid for Scientific Research (grant numbers 20001009 and 25221103 to A.N. and grant number 22570194 to K.K.) from the Ministry of Education, Culture, Sports, Science and Technology of Japan and by the Bioarchitect, the Extreme Photonics, and the Cellular Systems Biology Projects of RIKEN to A.N.

Author contributions

K.K. designed the study, performed all the experiments, analysed the data and wrote the manuscript. M.O. generated the yeast strains and plasmids. A.N. supervised the study.

Additional information

Supplementary Information accompanies this paper at <http://www.nature.com/naturecommunications>

Competing financial interests: The authors declare no competing financial interests.

Reprints and permission information is available online at <http://npg.nature.com/reprintsandpermissions/>

How to cite this article: Kurokawa, K. *et al.* Contact of cis-Golgi with ER exit sites executes cargo capture and delivery from the ER. *Nat. Commun.* **5**:3653 doi: 10.1038/ncomms4653 (2014).



This work is licensed under a Creative Commons Attribution-NonCommercial-NoDerivs 3.0 Unported License. The images or other third party material in this article are included in the article's Creative Commons license, unless indicated otherwise in the credit line; if the material is not included under the Creative Commons license, users will need to obtain permission from the license holder to reproduce the material. To view a copy of this license, visit <http://creativecommons.org/licenses/by-nc-nd/3.0/>