



ERRATUM

Eur. J. Hum. Genet 1998; 6: 158-164

Emma L Wakeling, Sayeda N Abu-Amero, Philip Stanier, Michael A Preece and Gudrun E Moore
 Human *EGFR*, a candidate gene for the Silver-Russell syndrome, is biallelically expressed in a wide range of fetal tissues.

In the above article some of the bands in Figure 3 did not reproduce satisfactorily. The figure, plus a schematic representation, is reproduced below:

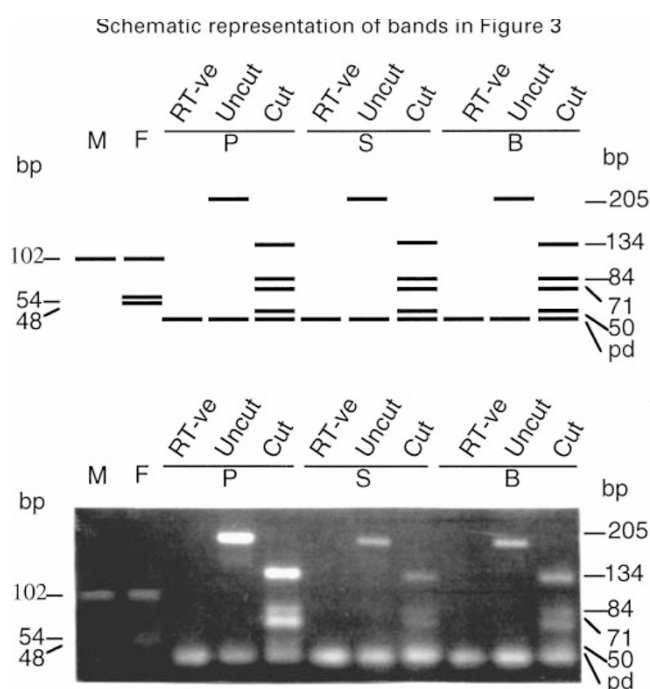


Figure 3 Demonstration that *EGFR* is biallelically expressed in placenta (P), skin (S) and brain (B) from heterozygous fetus, F17. Genomic DNA from the homozygous mother (M) and heterozygous fetus (F) has been amplified with primer pair B1/B2; cDNA has been amplified with primer pair A1/A2. The use of primers A1/A2 which span an intron, provides a control for the absence of genomic contamination. This is additionally confirmed by the RT-ve control lanes. Restriction digest cuts the 205 bp fragments (A1/A2) to give four bands, as expected if both parental alleles are expressed. Primer-dimer band (pd) visible for primer pair A1/A2