

Not only are they not getting it, but they can see no means by which, within the SRC as it stands, they can right the balance if it tips too much in the universities' direction.

Yours faithfully,

JOHN LYONS
Deputy General Secretary.

*The Institution of Professional Civil Servants,
Northumberland Street,
London WC2*

Orbital Planes of Planets

SIR,—Recently (April 26) we attended a lecture at the University of the South, Sewanee, Tennessee, by Dr Peter Van de Kamp of Sproul Observatory, Swathmore, Pennsylvania. He spoke on "The Search for Extra-Solar Planets", his work for 35 years, which indicates that Barnard's star has two planetary companions bearing a similarity to Jupiter and Saturn.

This lecture restimulated an idea held by one of us (Wells) for several years. We know the ecliptic plane is practically at right angles to the plane of the galaxy,

but we don't know if this is only by chance or of deep significance. After the lecture Dr Van de Kamp was asked if enough was known about the orbits of stars with companions to determine orbital planet orientation. He said he had not considered it but some work might well be devoted to the question. He commented on the planes of binaries as being apparently random.

During the 70 mile drive home, we discussed this further. It was decided that, since Dr Van de Kamp had not investigated this relationship, it may not ever have been properly considered.

It seems that one of the most fundamental bits of information that could come of extra-solar planet searches would be a determination of the distribution of orbital planes. If other solar systems besides ours should be found with the orbital planes also at right angles it would be suggestive, with probable implications for galactic evolution, as indeed would any significant deviation from random orientation of orbital planes.

Should a preferred orientation be established, it could have a great bearing on theories of galactic dynamics. It

would seem that our solar system may have been formed approximately 90° from the present galactic location initially, since difficulties are foreseen in trying to reconcile the ecliptic angle with fluid mechanics or condensation theories.

If we should be able to determine the plane of other ecliptics around other stars, it would greatly simplify the search for extra-solar planets by determining the directions from the stars to expect planets; a great advantage in radio astronomy or other scanning methods. For instance, Project Ozma was apparently limited in scan directions.

It was felt that this letter might bring comments from others on this question and help keep it before the attention of astronomers who might be able further to evaluate and pursue the phenomena.

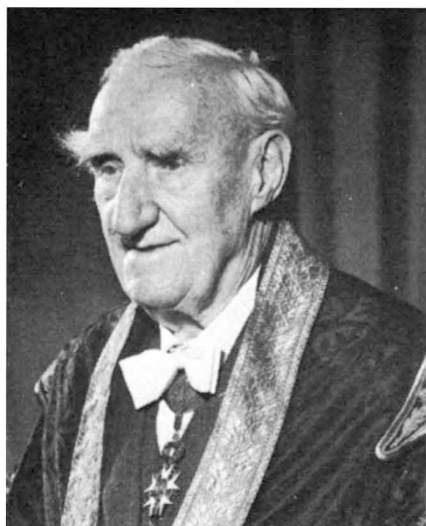
Yours faithfully,

ERNEST H. WELLS
DANIEL PAYNE HALE

*National Aeronautics and Space Administration,
George C. Marshall Space Flight Center,
Huntsville, Alabama 35812*

Obituary

Lord Boyd Orr



LORD BOYD ORR of Brechin Mearns, Nobel Peace Laureate, Chancellor of the University of Glasgow, first director-general of the United Nations Food and Agricultural Organization, first director of the Rowett Research Institute and founder of the World Food Council, died on June 25 at the age of ninety.

John Boyd Orr was a graduate in arts, science and medicine of the University of Glasgow, where he also obtained his MD and DSc. His first external appointment was to a new research post in Aberdeen linked to the College of Agriculture and the

university. This subsequently grew into the Rowett Research Institute. However, before he could get established the First World War began. Until 1917, he served with the RAMC, winning the DSO and MC with bar. Later he undertook an investigation of the physical requirements of servicemen for the navy.

Some of his first experience in nutritional investigation was gained in collaboration with the late Professor E. P. Cathcart at Glasgow. Here he worked chiefly on water and protein metabolism and on energy expenditure during work. There he was influenced by research on the diet of the working classes. On moving to Aberdeen, he took the advice of Cathcart and studied the mineral metabolism and needs of farm livestock, developing both topics with characteristic energy and insight. Some of his most impressive work was on mineral deficiencies and soil exhaustion in relation to pasture production both at home and abroad. This led him to establish a clinical unit to investigate the effects of husbandry techniques on the human populations of Masai and Kikuyu. It also established his interest in nutrition and disease and their interrelations.

He was responsible for great improvements in the production of meat, wool and milk, and helped to bring prosperity to the livestock industry. He gave the farmer more precise

knowledge in the selection of food mixtures as a substitute for growing pastures, particularly in the wintering of his stock. He also gave some definition to the biochemical and immunological changes which precede and accompany the general symptoms of disordered metabolism caused by nutritional deficiency or imbalance. After starting work at the institute in a cellar of Marischal College, Orr received the financial backing of such men as Dr John Quiller Rowett (after whom the institute was named) and was able to establish at the institute the Imperial Bureau of Animal Nutrition.

Orr's professional concern was with animals of agricultural importance, but he found that whereas he had no difficulty in persuading farmers of the value to their stock and pockets of the application of sound nutritional principles, he could not convince anyone that the same was true of children. At that period the nutrition of man himself was an art rather than science, empiricism rather than experimentation, general impressions rather than controlled observation. But now, the newer knowledge of nutrition was growing, requirements could approximately be defined, and dietary surveys could expose the gap between requirement and that consumed. A large scale demonstration of the nutritious value of milk for school children partly done to promote the increased consumption

of milk for the benefit of the dairy industry, but primarily done to promote the health of the children whom he suspected of being undernourished, led to further work on human nutrition. With government financial help he undertook the survey which became a classic: *Food, Health and Income*, and was first published in 1936 and had world-wide repercussions.

Then there followed the more extensive dietary and clinical surveys of representative groups of families with children of varying income levels in many parts of Britain, which further demonstrated the relation of food, health and income, and the consciousness of this on a world scale grew into a natural and later international food policy based on human needs. This was supported by Carnegie UK Trust funds. Such was the value of this

accumulated knowledge of human needs and intakes that Orr was able to so advise the Government on the scientific food policy during World War II that we were able to emerge in a better nutritional state than when we entered, for rationing was based on needs and not on purchasing power. Further, these observations and knowledge displayed by Orr so impressed the United Nations that Sir John Orr—as he then was, having been knighted in 1935—was appointed at the Quebec Conference the first director-general of the Food and Agricultural Organization, coinciding with his retirement from the Rowett Research Institute in the autumn of 1945, and this post he held until 1948. It was on the platform or at the conference table that his biggest personal impacts were made.

He was lean with craggy eyebrows,

long jawed, and although he had no tricks of oratory, the single-mindedness of his argument—one thing at a time—and his prophetic sincerity generally won the day. Some thought him naïve, but it was an expressed simplicity with a purpose. His hunches were very sound: he was sometimes impatient of the slowness of the research worker to corroborate what he felt in his bones to be valid and vital.

Orr inherited much of his strength of character from his mother, who was a Boyd. In 1915 he married Miss Elizabeth Pearson Callum, of West Kilbride. They were seldom separated and travelled the world together. She was a wonderful partner and ambassador. He is survived by his wife and two married daughters. Their only son was killed on a Coastal Command mission during the war.

Announcements

International Meetings

September 15–17, **British Society for Cell Biology Meeting**, Bristol (Dr J. M. N. Boss, Department of Physiology, Veterinary School, Park Row, Bristol BS1 5LS).

September 20–21, **Small Craft**, Southampton (Royal Institution of Naval Architects, 10 Upper Belgrave Street, London SW1X 8BQ).

September 21–23, **Infrared Techniques**, Reading (Conference Department, Institution of Electronic and Radio Engineers, 8–9 Bedford Square, London WC1B 3RG).

September 28–29, **Biochemistry, Genetics and Therapy of Schizophrenia**, London (Schizophrenia Association of Great Britain, Llanfair Hall, Caernarvon).

September 28–29, **Ultrasonics 71**, London (Mr A. H. Crawford, Ultrasonics 71, 32 High Street, Guildford, Surrey).

October 11–12, **Natural Slopes Stability and Conservation**, Naples and Cosenza (Dr G. Guzzetta, Istituto di Geologia, Naples, Italy).

October 18–22, **Eurocon 71**, Lausanne (Eurocon 71 Office, 24 Chemin de Bellevue, CH-1007 Lausanne, Switzerland).

November 10, **Medical Thermography**, London (Warren Cook & Partners, Woodfield House, Goudhurst, Kent).

November 11–12, **Coatings**, Great Malvern (M. G. Bader, Department of Metallurgy and Materials Technology, University of Surrey, Guildford, Surrey).

November 11–12, **Endocrine and Non-endocrine Hormone Producing Tumours**, Houston (Mrs Jane Brandenberger, Information Coordinator, University of Texas M.D. Anderson Hospital and Tumor Institute, Texas Medical Center, Houston, Texas 77025, USA).

Reports and Publications

not included in the Monthly Books Supplement

Other Countries

Australian Journal of Zoology. Supplementary Series. Supplement No. 1: The Tipulidae (Diptera) of Australia. 3: The Genus *Ptilogyna* Westwood. By N. V. Dobrotworsky. Pp. 41. (East Melbourne: CSIRO, 1971.) [195]

Australian Academy of Science. Reports No. 13: Education and the Environmental Crisis. (Proceedings of a Conference held in Canberra, 24–26 April 1970 under the auspices of the Australian Academy of Science through its National Committee for the International Biological Programme.) Edited by Jeremy Evans and Stephen Boyden. Pp. 117. (Canberra: Australian Academy of Science, 1970.) [195]

Evaluation of Food Additives: Specifications for the Identity and Purity of Food Additives and their Toxicological Evaluation—Some Extraction Solvents and Certain other Substances; and a Review of the Technological Efficacy of some Antimicrobial Agent. (Fourteenth Report of the joint FAO/WHO Expert Committee on Food Additives, Geneva, 24 June–2 July 1970. FAO Nutrition Meetings Report Series, No. 48. WHO Technical Report Series, No. 462.) Pp. 36. (Rome: FAO; London: HMSO, 1971.) 30p; \$1. [205]

National Academy of Engineering—Committee on Public Engineering Policy. Federal Support of Applied Research. Pp. 16. Priorities in Applied Research: an Initial Appraisal. Pp. 33. (Washington, DC: National Academy of Engineering, 1970.) [215]

Mercury in the Environment—The Human Element. By Robin A. Wallace, William Fulkerson, Wilbur D. Shults and William S. Lyon. (ORNL-NSF Environmental Program. ORNL NSF-EP-1.) Pp. vii+61. (Oak Ridge, Tennessee: Oak Ridge National Laboratory, 1971.) [215]

HOW TO BUY NATURE

Volumes start in January, March, May, July, September and November, but subscriptions may begin at any time.

The direct postal price per subscription is:

12 MONTHS* (52 issues per title)

	Surface Mail		Airfreight	
	UK and worldwide	U.S.A.	Canada	
Nature (Friday)	£14	\$48	\$52	
Nature + Nature Physical Science	£24	\$83	\$90	
Nature + Nature New Biology	£24	\$83	\$90	
All three editions	£29.50	\$108	\$116	
Annual Index	£1	\$3	\$3	

* Rates for shorter periods *pro rata* (minimum three months)

(Charge for delivery by air mail on application)

Editorial and Publishing Offices of NATURE

MACMILLAN JOURNALS LIMITED
4 LITTLE ESSEX STREET, LONDON WC2R 3LF
Telephone Number : 01-836 6633. Telegrams : Phusis London WC2R 3LF

711 NATIONAL PRESS BUILDING
WASHINGTON DC 20004
Telephone Number : 202-737 2355

Subscription Department
MACMILLAN JOURNALS LIMITED
BRUNEL ROAD, BASINGSTOKE, HANTS
Telephone Number : Basingstoke 5431

American display advertisements
NATURE SCIENTIFIC PUBLICATIONS INC
711 NATIONAL PRESS BUILDING
WASHINGTON DC 20004

All other advertisements
T. G. SCOTT & SON, LIMITED
1 CLEMENT'S INN, LONDON WC2A 2ED
Telephone : 01-242 6264/01-405 4743
Telegrams : Textualist London WC2A 2ED

Registered as a newspaper at the Post Office

Copyright © Macmillan Journals Limited, August 20 1971