



Author Correction: Drought re-routes soil microbial carbon metabolism towards emission of volatile metabolites in an artificial tropical rainforest

Correction to: *Nature Microbiology* <https://doi.org/10.1038/s41564-023-01432-9>.
Published online 31 July 2023.

<https://doi.org/10.1038/s41564-023-01507-7>

Published online: 6 October 2023



Linnea K. Honeker , Giovanni Pugliese , Johannes Ingrisch , Jane Fudyma, Juliana Gil-Loaiza , Elizabeth Carpenter, Esther Singer, Gina Hildebrand, Lingling Shi, David W. Hoyt , Rosalie K. Chu , Jason Toyoda, Jordan E. Krechmer , Megan S. Claflin , Christian Ayala-Ortiz , Viviana Freire-Zapata , Eva Y. Pfannerstill , L. Erik Daber , Kathiravan Meeran , Michaela A. Dippold, Jürgen Kreuzwieser , Jonathan Williams , S. Nemiah Ladd , Christiane Werner , Malak M. Tfaily & Laura K. Meredith

In the version of this article initially published, there was a mistake in Fig. 2f where ^{13}C -diacetyl was plotted instead of ^{13}C -enriched diacetyl ($^{13}\text{C}/^{12}\text{C} + ^{13}\text{C}$). This error led to the erroneous conclusion that there was ^{13}C -enriched diacetyl emitted from chambers that received $^{13}\text{C}1$ -pyruvate. The corrected version replaces Fig. 2i with ^{13}C -enriched diacetyl continuous flux data. Furthermore, since there was no ^{13}C -enriched diacetyl emitted from chambers that received $^{13}\text{C}1$ -pyruvate, Fig. 2, panel i (as well as panel h), was corrected to show only cumulative ^{13}C -fluxes from chambers that received $^{13}\text{C}2$ -pyruvate where there were ^{13}C -enriched fluxes. Fig. 3, panel a, was corrected to leave only a pink circle under “Diacetyl” indicating ^{13}C -enrichment from only chambers that received $^{13}\text{C}2$ -pyruvate. Original and corrected Fig. 2f–i and 3a panels are shown as, respectively, Fig. 1 and Fig. 2 below. Finally, in the Results section, the associated text that

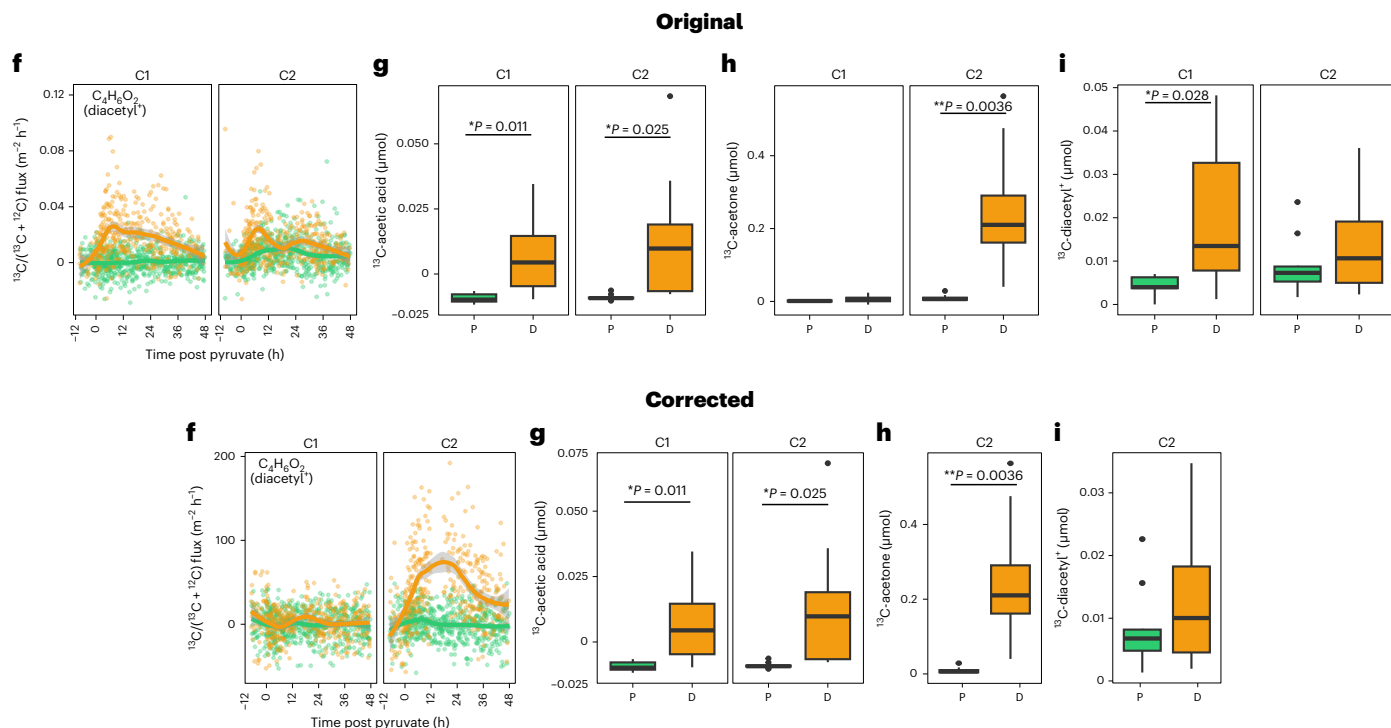


Fig. 1 | Original and corrected Fig. 2f–i.

