

ARTICLE OPEN



Coronary artery disease, its associations with ocular, genetic and blood lipid parameters

Indrė Matulevičiūtė¹✉, Vacis Tatarūnas², Vilius Skipskis², Ieva Čiapienė², Audronė Veikutienė², Vaiva Lesauskaitė², Olivija Dobilienė³ and Dalia Žaliūnienė¹

© The Author(s) 2023

BACKGROUND/OBJECTIVES: To investigate the associations between ophthalmic parameters, *CYP4F2* (rs2108622) and *ABCA1* (rs1883025) polymorphisms and coronary artery disease, considering the accessibility, non-invasive origin of retinal examination and its possible resemblance to coronary arteries.

SUBJECTS/METHODS: Overall 165 participants divided into groups based on the coronary angiography results and clinical status: control group ($N = 73$), MI group ($N = 63$), 3VD (three vessel disease) ($N = 24$). All the participants underwent total ophthalmic examination – optical coherence tomography (OCT) and OCT angiography of the macula region were performed and evaluated. Total cholesterol, high-density lipoprotein, low-density lipoprotein and triglyceride cholesterol (Tg-C) were tested. A standard manufacturer's protocol for *CYP4F2* (rs2108622) and *ABCA1* (rs1883025) was used for genotyping with TaqMan probes.

RESULTS: GCL+ layer was thicker in control group vs. 3VD group (74.00; 62.67–94.67 (median; min.-max.) vs. 71.06; 51.33–78.44, $p = 0.037$). T allele carriers under *ABCA1* rs1883025 dominant model were shown to have thicker retina and smaller foveal avascular zone in superficial capillary plexus and smaller Tg-C concentration. *ABCA1* rs1883025 was associated with retinal thickness (OR = 0.575, 95% CI 0.348–0.948, $p = 0.030$). Univariate logistic regression showed that *ABCA1* rs1883025 CT genotype is associated with decreased risk for coronary artery disease development under overdominant genetic model (OR = 0.498, 95% CI 0.254–0.976; $p = 0.042$) and codominant genetic model (OR = 0.468, 95% CI 0.232–0.945, $p = 0.034$).

CONCLUSIONS: Results of this study confirmed that non-invasive methods such as OCT of eye might be used for identification of patients at risk of CAD.

Eye (2024) 38:372–379; <https://doi.org/10.1038/s41433-023-02703-9>

INTRODUCTION

Coronary artery disease (CAD) is one of the main causes of mortality and disability in adult population. Studies investigating possible associations between eyes and heart diseases have been going on for decades, only the methods evolved with upcoming technologies [1–6]. At present the researchers suggest retinal investigation as a possible method to predict CAD [7, 8].

Cardiovascular diseases, such as CAD, stroke and heart failure, has been shown to correlate with the structure of retinal vessels, but the results are diverse and further studies are needed to develop a risk-scoring system using retinal vessels [9]. Atherosclerosis is a progressive chronic inflammatory condition involved in pathogenesis of CAD, stroke, and peripheral arterial disease [10]. Clinical studies show a direct link between immune cells, hyperlipidemia, atherosclerosis, and cardiovascular events as well as retinal diseases [11–13]. Thus, according to a novel description of atherosclerosis mechanism, the atherogenic process starts with the accumulation of several plasma lipoproteins in the sub-endothelial space at sites of flow perturbation and endothelial dysfunction [12, 13].

Lipids are not only a significant factor for atherosclerosis development but also an important component in retinal pigment

epithelium (RPE) and photoreceptors function of the retina. The balance between production and anabolism of lipids is a key factor in retinal health. Several proteins on RPE surface are participating the influx (LDL receptor, VLDL receptor, SCARB1) and efflux (*ABCA1*, *ABCG1*) of lipids. Degraded lipids from photoreceptors outer segments are influxed in RPE and reused. Some of lipids, such as arachidonic acid (AA) are used to produce signalling lipids that are used to ensure proper function of the retina [14].

It was shown by several studies that 20-hydroxytetraenoic acid (20-HETE) has a significant role in cardiovascular disease. 20-HETE is a metabolite of AA. In human body AA is ω -hydroxylated via *CYP450* pathway into 20-HETE [15]. 20-HETE has complex interactions with renin-angiotensin-aldosterone system (RAS). Both 20-HETE and the RAS work towards vascular dysfunction, hypertension, and inflammation [16]. 20-HETE was also shown to play a role in endothelium activation and dysfunction [17]. Studies with 20-HETE inhibitors in vascular inflammation/injury models showed that inhibition in 20-HETE reduces inflammatory reaction to injury [18, 19].

The *CYP4F2* SNP rs2108622 (namely, V433 M, G1347A, –1347 C > T and G20597A) was proved to lead to a protein with significantly reduced AA metabolising activity [20, 21]. The latter

¹Department of Ophthalmology, Lithuanian University of Health Sciences, Kaunas, Lithuania. ²Institute of Cardiology, Lithuanian University of Health Sciences, Kaunas, Lithuania. ³Department of Cardiology, Lithuanian University of Health Sciences, Kaunas, Lithuania. ✉email: indrė.matuleviciute@lsmu.lt

Received: 13 March 2023 Revised: 31 July 2023 Accepted: 7 August 2023

Published online: 16 August 2023

SNP has been investigated in the hypertensive patients [22, 23], stroke [24], myocardial infarction [23].

ATP-binding cassette transporter A1 (ABCA1) is an important protein that maintains cholesterol homeostasis and is also significant in inflammatory response. ABCA1 interacts with lipid-free or poorly lipidated apolipoproteins (apos) to form nascent high-density lipoprotein (HDL) particles. ABCA1 can also interact with small HDL particles to accept sterols from cells [25]. ABCA1 in macrophages is extremely important in foam cell formation [26, 27]. It serves as an atheroprotector in macrophages not only through cholesterol efflux but also through its ability to modulate the inflammatory response [25]. It is thought that accumulation of lipids in subretinal space and increased inflammatory response are key factors in drusen formation and AMD development [28].

The proatherogenic cytokines (interferon (IFN)- γ , interleukin (IL)-1 β , platelet-derived growth factor (PDGF)) have been shown to inhibit the expression of ABCA1 while anti-inflammatory cytokines such as IL-10 and TGF- β 1 have been shown to increase the expression of ABCA1 [29]. The expression of ABCA1 is also upregulated when cell is overloaded with cholesterol [30].

The ABCA1 SNP rs1883025 was shown to have impact on HDL cholesterol (HDL-C) concentration and A allele was associated to decreased HDL-C concentration [31, 32]. It was found that higher number of C alleles was associated with higher serum HDL-C level [33]. A large (3066 Caucasian subjects) cohort study has shown that T allele was protective against large and intermediate drusen and advanced AMD [34], however, it was not proven by a meta-analysis [35]. Animal study including ABCA1/ABCG1 knock out mice showed increased lipid accumulation in RPE cells leading to RPE atrophy and inflammatory cells accumulation [36].

A recent review suggests that retinal photographs could be used in deep learning techniques for prediction of systemic diseases, including cardiovascular disease, while retinal optical coherence tomography (OCT) and optical coherence tomography angiography (OCT-A) are being used in prediction of cardiovascular disease in non-deep learning studies [37]. Considering the accessibility, non-invasive origin of retinal examination and its possible resemblance to coronary arteries we aimed to investigate the associations between ophthalmic parameters, *CYP4F2* (rs2108622) and *ABCA1* (rs1883025) polymorphisms and CAD.

METHODS

One hundred and sixty-five participants from the Cardiology Department of the Hospital of the Lithuanian University of Health Sciences Kaunas Clinics were included in the study during the period between January 2019 and November 2021. All participants underwent ECG registration, echocardiography, and coronary angiography procedure. Based on the coronary angiography results and clinical status of the patient were formed groups: i) control group with coronary arteries without obstructions, ii) MI group, iii) 3VD (three vessel disease) group with all three coronary arteries affected and without previous history of acute coronary syndrome or revascularization. The patient selection and inclusion process are presented in supplements Fig. 1. The study was approved by the Kaunas regional bioethics committee (BE-2-101, 2018-12-20). Written informed consent was obtained from participants to allow analysis of the collected data. The study was planned in accordance with the Tenets of the Declaration of Helsinki.

Systemic exclusion criteria were the same for all groups. Patients with previous coronary angiography and percutaneous coronary intervention, diabetes, oncologic diseases, previous heart surgery, stroke were not included in the study. **Ophthalmic exclusion criteria** for all groups were high refractive error (myopia and hyperopia greater than 6.0 dioptres or astigmatism greater than \pm 3.0 dioptres), amblyopia, previous ocular trauma, intraocular inflammation, ocular surgeries except cataract removal with uneventful phacoemulsification surgery, glaucoma, macular disorders, or any conditions obscuring the view of the fundus.

The participants were asked to complete the questionnaire related to their cardiologic condition. The questions included systolic and diastolic blood pressure measurement at home, previous cardiologic procedures –

heart surgery, percutaneous coronary interventions, antihypertensive, cholesterol-lowering medications. According to the patients answers and patient case information, the participant was stated to have hypertension if the diagnosis was present in the case, or the patient was using antihypertensive medications. The waist circumference was measured [38]. Total cholesterol, HDL-C, LDL cholesterol (LDL-C) and triglyceride cholesterol (Tg-C) were tested as a standard treatment procedure for all the patients. The blood sample was drawn in an outpatient setting for control and 3VD group and after the hospitalisation for MI patients.

All the patients underwent total ophthalmic examination (visual acuity assessment, tonometry, biomicroscopy, ophthalmoscopy) in the Department of Ophthalmology of the Hospital of the Lithuanian University of Health Sciences Kaunas Clinics. The examination was performed during the first five days after myocardial infarction for MI group, within several weeks after coronary angiography for control and 3VD groups. The results of the optical coherence tomography (OCT) of the macula region were evaluated. The results are presented in nine Early Treatment of Diabetic Retinopathy Study (ETDRS) [39] regions (central, inner, and outer superior, inferior, nasal and temporal) by the OCT device. The average of the nine regions was calculated and presented as an average total thickness. The average total retinal, choroidal thickness, thickness of retinal layers (RNFL ((retinal nerve fibre layer), GCL + + (between internal limiting membrane (ILM) and inner plexiform layer-inner nuclear layer (INL) boundaries), GCL+ (between retinal nerve fibre layer-ganglion cell and inner plexiform layer-inner nuclear layer boundaries) were calculated. The images of macular OCT evaluation are presented in Fig. 1. The vascular density (VascDen) (6×6 mm) of the superficial (SCP) and deep vascular layers (DCP) as well as foveal avascular zone area (3×3 mm) was obtained from macular optical coherence tomography angiography. Full description of patient inclusion and examination process was described in previous publication [40].

Blood samples for genotyping were collected during first 5 days after MI, and several days after coronary angiography in the patients of 3VD and control groups. Genotyping procedures were performed at the certified Laboratory of Molecular Cardiology, Institute of Cardiology, Lithuanian University of Health Sciences, Kaunas, Lithuania. DNA extraction was performed by using the salting-out method. A standard manufacturer's protocol for *CYP4F2* (rs2108622) and *ABCA1* (rs1883025) was used for genotyping with TaqMan probes (Applied Biosystems (ABI, Waltham, Massachusetts, USA). Genotyping was performed with Quantstudio 3 (ThermoFisherScientific) real-time PCR instrument.

Statistical analysis

Statistical analysis was performed using IBM SPSS Statistics 27. To predict CAD with margin error of 5% and confidence level of 95% according to the incidence of CAD worldwide (1.72%) [41] the sample size of 26 patients in the group was calculated. The normal distribution of data was not observed, therefore nonparametric Kruskal–Wallis, and Mann–Whitney *U* tests were used for comparison of three (MI, healthy, 3VD groups) and two groups (healthy and CAD (MI and 3VD together), respectively. Multi-comparison Bonferroni adjusted *p* value was displayed when pairwise comparisons within three groups were performed. The χ^2 test was used to compare the distribution of drug usage between groups. Binary logistic regression was used to predict CAD. The result was presented as an odds ratio (OR) with a 95% confidence interval (95% CI). Hardy-Weinberg equilibrium (HWE) was used to evaluate the observed and expected frequencies of variants of interest (rs2108622, rs1883025) between groups (MI, healthy, 3VD) using the χ^2 test. The χ^2 test was used to compare the distributions of *CYP4F2* (rs2108622) and *ABCA1* (rs1883025) between groups. Various genetic models (codominant (wild type homozygous versus heterozygous versus minor allele homozygous), recessive (wild type homozygous + heterozygous versus minor allele homozygous), dominant (wild type homozygous versus heterozygous + minor allele homozygous), overdominant (wild type homozygous + minor allele homozygous versus heterozygous), and additive inheritance) were used in the analysis. Quantitative variables were described as median; minimum-maximum, qualitative variables were described using frequencies and percent. A *p*-value < 0.05 was considered statistically significant.

RESULTS

A total of 73 healthy subjects, 68 patients with MI (53 STEMI and 15 non STEMI) and 24 patients with 3VD were included in the analysis. Table 1 represents demographic and clinical characteristics of study participants. Most of patients with 3VD had arterial hypertension

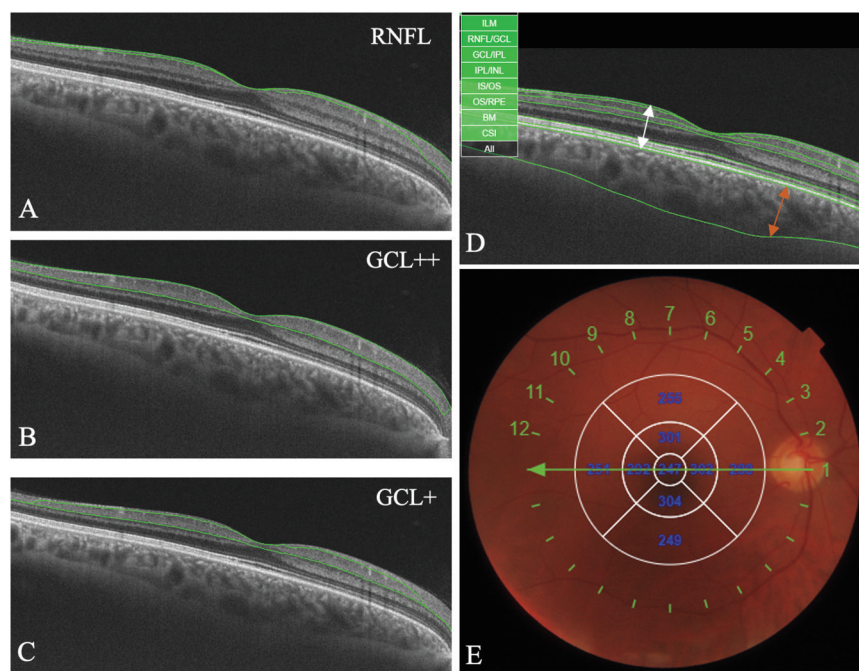


Fig. 1 Optical coherence tomography of the macular region. **A–C** images represent the RNFL, GCL ++ and GCL+ layers respectively. The layers are marked in between the green lines. The white and orange arrows in image **D** represents total retinal and choroidal thickness, respectively. **E** Device generated an Early Treatment of Diabetic Retinopathy Study (ETDRS) thickness map centred on the fovea. The ETDRS plot includes three circles with diameters of 1, 3 and 6 mm, dividing the macula into two rings and further dividing it into four quadrants: superior, inferior, nasal, and temporal.

Table 1. Demographic and clinical characteristics of study participants.

Characteristic	Control group	MI group	3VD group	<i>p</i> value
Sex, n (%)				
Male	40 (54.8)	41 (60.3)	17 (70.8)	0.374
Female	33 (45.2)	27 (39.7)	7 (29.2)	
Age, years (median; min.-max.)	59.22; 42.52–75.68	58.89; 35.51–77.21	64.87; 49.98–74.57	0.407
Arterial hypertension, n (%)	62 (84.9)	50 (73.5)	23 (95.8)	0.034
Systolic blood pressure, mmHg (median; min.-max.)	136.5; 100–175	138; 80–250	135; 120–160	0.609
Diastolic blood pressure, mmHg (median; min.-max.)	80; 60–102	85; 60–140	80; 70–100	0.023
Body mass index, kg/m ² (median; min.-max.)	29.70; 23.03–45.91	28.06; 20.55–38.37	29.05; 22.07–36.0	0.016
Waist circumference, cm (median; min.-max.)	101; 81–132	99; 70–127	104; 76–113	0.276
Total cholesterol, mmol/l (median; min.-max.)	5.46; 3.33–8.53	5.77; 3.12–9.90	5.86; 3.40–14.10	0.241
HDL-C, mmol/l (median; min.-max.)	1.36; 0.60–2.65	1.21; 0.61–2.06	1.44; 0.88–4.23	0.028
LDL-C, mmol/l (median; min.-max.)	3.80; 0.87–5.84	3.85; 1.58–6.47	2.70; 0.9–6.47	0.021
Tg-C, mmol/l (median; min.-max.)	1.26; 0.44–3.82	1.39; 0.46–11.69	1.36; 0.73–12.1	0.517
Left ventricular end diastolic diameter, mm (median; min.-max.)	49.5; 41.0–73.0	48.0; 37.0–61.0	48.0; 37.0–56.0	0.143
Left ventricular mass index, g/mm ² (median; min.-max.)	98.51; 70.12–182.70	95.46; 47.91–176.06	86.82; 65.05–141.13	0.324
Ejection fraction, % (median; min.-max.)	55; 25–70	45; 20–55	55; 50–60	<0.001

Bold values represent statistically significant differences.

($p = 0.034$). Systolic blood pressure values were similar in all groups, while diastolic blood pressure was highest in MI group (pairwise comparison Control vs. MI $p = 0.013$, *Bonferroni corrected* $p = 0.040$, MI vs. 3VD $p = 0.042$, *Bonferroni corrected* $p = 0.125$). The difference of body mass index after pairwise comparison was determined between Control and MI groups only ($p = 0.004$, *Bonferroni corrected* $p = 0.012$). Total cholesterol and Tg-C blood levels were similar. The difference between HDL-C and LDL-C was determined between MI and 3VD groups after pairwise comparison ($p = 0.018$,

Bonferroni corrected $p = 0.053$; $p = 0.007$, *Bonferroni corrected* $p = 0.022$, respectively). The usage of cholesterol lowering drugs differed significantly between groups (31.5% vs. 7.5% vs. 54.2% in control, MI and 3VD groups respectively, $p < 0.001$). Echocardiography parameters did not differ significantly between the groups except ejection fraction, where MI group showed significantly lower ejection fraction after pairwise comparison (MI vs. control $p < 0.001$, MI vs. 3VD $p < 0.001$, *Bonferroni corrected* $p < 0.001$ in both comparisons) (Table 1).

Ophthalmic evaluation

The visual acuity and intraocular pressure of the patients were similar in all the groups and within normal limits. Three patients had cataract surgery performed and monofocal intraocular lens implanted in their study eye, while all the other participants had light to moderate cataract. The results of OCT and OCTA investigation are displayed in Table 2. None of the ophthalmic parameters differed significantly between groups, except GCL+ thickness. After a pairwise comparison a statistically significant difference of GCL+ thickness was observed between control and 3VD groups ($p = 0.012$, *Bonferroni corrected* $p = 0.037$). GCL+ is a complex of ganglion cell layer and inner plexiform layer (IPL) where the bodies of first order neurons of visual pathway are located and connective cells of IPL. This complex is extremely important in visual function and is mostly investigated in glaucomatous optic neuropathy [42].

CYP4F2 rs21086226 and ABCA1 rs1883025 variants in represented patient groups

The distribution of genotypes and alleles of *CYP4F2* rs21086226 and *ABCA1* rs1883025 in the control, MI and 3VD group patients is displayed in supplements Table 1. There was no statistically significant difference between distributions under different genetic models. Hardy-Weinberg equation-based quality assessment of the genotypes showed no deviation in any of the analysed groups in both SNPs ($p > 0.05$).

CYP4F2 rs2108622 and ABCA1 rs1883025 variants, ophthalmic parameters, and lipid profile

Genetic models of inheritance were used to determine the effect of *CYP4F2* and *ABCA1* variants on clinical parameters. Differences between central VascDen medians (min.-max.) in DCP and *CYP4F2* rs21086226 in C allele carriers and non-carriers were observed

(18.92 (6.82–29.05) vs. 17.18 (14.50–18.51), $p = 0.036$). DCP is a vascular plexus, providing highly oxygenated blood to plexiform layers, that consists of high number of synapses and is essential for proper retinal function. In a study of *Genevois O* et al. DCP was proved to form collateral drainage in venous occlusive diseases [43].

Significant differences were observed when total retinal, retinal layers thickness and Tg-C concentration were compared under *ABCA1* rs1883025 dominant model (Table 3). No differences related to VascDen measurements were observed. No differences were observed under other genetic models (supplements Tables 2, 3), except SCP FAZ area under overdominant model.

Regression model for coronary artery disease

Univariate logistic regression showed that *ABCA1* rs1883025 CT genotype is associated with decreased risk for CAD development under overdominant genetic model (OR = 0.498, 95% CI 0.254–0.976; $p = 0.042$) and codominant genetic model (OR = 0.468, 95% CI 0.232–0.945, $p = 0.034$). Total retinal thickness and GCL+ was also related to slightly decreased risk of CAD development (Table 4).

DISCUSSION

In this study we tested hypothesis on associations between ophthalmic parameters, lipid profile and CAD. We found that *ABCA1* rs1883025 is related to retinal thickness while *CYP4F2* rs2108622 is related to the VascDen in DCP. *ABCA1* rs1883025 CT genotype is associated with decreased risk for CAD development in all participants.

In the current study, we analysed average retinal, choroidal, and retinal layers thickness and found that GCL+ thickness was significantly higher in healthy group than 3VD group. In our previous study [40], we analysed ocular parameters in ETDRS

Table 2. Ophthalmic examination results of the control, MI and 3VD groups.

Characteristic	Control group Median; min.-max.	MI group Median; min.-max.	3VD group Median; min.-max.	<i>p</i> value
Retinal thickness, μm	285.56; 258.67–323.67	281.11; 204.0–313.67	281.67; 250.67–297.11	0.078
Choroidal thickness, μm	258.67; 132.33–390.44	251.11; 67.44–414.22	208.00; 32.11–405.89	0.114
RNFL thickness, μm	30.44; 25.44–46.78	30.94; 24.78–64.78	30.72; 26.22–102.44	0.479
GCL + + thickness, μm	105.33; 90.22–134.11	105.17; 79.11–135.89	102.78; 85.22–115.67	0.331
GCL+ thickness, μm	74.00; 62.67–94.67	71.33; 60.89–89.22	71.06; 51.33–78.44	0.024
FAZ area SCP, μm^2	283.71; 0–611.28	299.36; 48.85–886.29	312.76; 93.87–580.43	0.795
FAZ area DCP, μm^2	231.50; 41.57–716.22	255.94; 44.12–700.84	362.72; 86.31–760.61	0.112
Central vascular density SCP	20.58; 10.87–27.72	19.99; 7.60–27.38	18.70; 11.75–26.47	0.462
Central vascular density DCP	18.68; 9.31–27.15	18.68; 6.82–28.19	18.83; 10.70–26.84	0.745

FAZ foveal avascular zone, SCP superficial capillary plexus, DCP deep capillary plexus.

Bold values represent statistically significant differences.

Table 3. Ophthalmic and blood test results in T allele carriers of *ABCA1* rs1883025.

Parameter	Non T allele carriers Median; min.-max.	T allele carriers Median; min.-max.	<i>p</i> value
Retinal thickness, μm	282.0 (256.11–323.67)	282.55 (204.00–315.78)	0.042
GCL + + thickness, μm	103.89 (84.00–134.11)	105.11 (79.11–119.67)	0.034
GCL+ thickness, μm	71.22 (59.89–94.67)	72.55 (60.89–86.67)	0.015
FAZ area SCP, μm^2	312.803 (92.549–886.289)	260.244 (0–611.279)	0.008
Tg-C, mmol/l	1.43 (0.46–12.1)	1.23 (0.44–3.41)	0.034

FAZ foveal avascular zone, SCP superficial capillary plexus, DCP deep capillary plexus.

Bold values represent statistically significant differences.

Table 4. Univariate logistic regression of ABCA1 rs1883025 and CYP4F2 rs21086226 for coronary artery disease.

	OR	CI 95%	p value
<i>CYP4F2</i> rs21086226			
Codominant model			
CC			
CT	0.911	0.473–1.753	0.780
TT	1.974	0.366–10.651	0.429
Dominant model			
CC			
TT + CT	1.013	0.538–1.907	0.967
Recessive model			
TT			
CC + CT	2.040	0.384–10.833	0.403
Overdominant model			
CC + TT			
CT	0.875	0.458–1.672	0.685
Additive model	1.075	0.628–1.840	0.791
<i>ABCA1</i> rs1883025			
Codominant model			
CC			
CT	0.468	0.232–0.945	0.034
TT	1.221	0.380–3.929	0.737
Dominant model			
CC			
TT + CT	1.631	0.865–3.074	0.130
Recessive model			
TT			
CC + CT	1.530	0.489–4.784	0.465
Overdominant model			
CC + TT			
CT	0.498	0.254–0.976	0.042
Additive model	0.802	0.496–1.297	0.368
<i>Ophthalmic parameters</i>			
Retinal thickness	0.976	0.955–0.998	0.035
Choroidal thickness,	0.258	0.993–1.002	0.258
RNFL layer thickness	0.137	0.986–1.105	0.137
GCL ++ layer thickness	0.972	0.939–1.006	0.109
GCL+ layer thickness	0.934	0.890–0.981	0.006
FAZ area SCP	1.001	0.999–1.003	0.425
FAZ area DCP	1.001	0.999–1.003	0.509

Bold values represent statistically significant differences.

segments and found significant segmental differences in total choroidal, retinal and GCL+ thicknesses. Other studies, investigating ocular parameters in CAD patients rarely performed retinal layer analysis. Wang et al. [44] analysed total retinal thickness and did not find any significant differences between healthy and CAD patients. They found a significant decrease in vessel density in CAD patients, opposite to our results. Neoh et al. [45] investigated RNFL thickness in 3VD patients and controls and found a significant decrease in RNFL thickness in 3VD group, while we only observed a slight decrease that was not statistically significant. Unfortunately, they did not analyse GCL+. Xie H et al. [46] evaluated hypertensive patients and found that

ganglion cell layer was thinner in patients with higher blood pressure. GCL+ and specifically GCL consist of the first order visual neuron bodies that are important in visual signalling and glaucoma. One the mechanism related to normal tension glaucoma is microvascular dysfunction and oxidative stress [47] that are the key factors related to atherosclerosis and CAD. A study by Song et al. have also found a relation between glaucoma, mainly affecting RNFL and GCL and atherosclerosis [48]. When performing a genetic analysis, we found that the distribution of *CYP4F2* (rs2108622) and *ABCA1* (rs1883025) alleles in control group was similar to the results of control groups from other studies performed in Lithuania [49, 50]. The control groups consisted of patients without changes in the macular region of the retina. Genome-wide association study, representing 7 different population showed that the prevalence of rs1883025 A (T) allele in European-American population is 26% [51]. The Finnish study, investigating vit. E supplementation found that the prevalence of rs2108622 T (A) allele in male population is 19% [52]. Similarly, the prevalence of rs1883025 A (T) was 26.7% and rs2108622 T (A) was 20.5%.

CYP4F2 is a monooxygenase important in 20-HETE metabolism and inflammatory state of the body. Considering CAD, a chronic inflammatory condition we hypothesised to find different allelic distribution between groups. In our study we did not find any differences of *CYP4F2* (rs2108622) alleles distribution in healthy, MI and 3VD groups, similarly to *Al Eitan LN* et al. [53] where healthy and cardiovascular patients were compared. A study investigating Chinese Han population [54] found a significantly higher frequency of GG genotype in CAD patients than controls, but only a haplotype consisting of both rs2108622 and rs3093105 was found to be related to CAD development. A meta-analysis performed by Zhang et al. [55] showed decreased risk of CAD development in *CYP4F2* (rs2108622) GA polymorphism group. Geng [56] did a meta-analysis investigating rs2108622 in hypertensive patients and found a strong link between hypertension and previously mentioned SNP. Our study included 81% of participants diagnosed with hypertension (no differences between groups, $p > 0.05$). This could be a factor impacting similar distribution of *CYP4F2* rs2108622 alleles between groups in our study.

The distribution of ophthalmic parameters in accordance with SNPs was analysed. We found that TT (rs2108622) carriers had significantly lower central VascDen in DCP. DCP is comprised of two vascular layers – intermediate at the IPL / inner nuclear layer (INL) boundary, and deep at the INL/outer plexiform layer boundary [57]. There are no studies evaluating retinal VascDen and *CYP4F2* rs2108622. A study performed by Mockute et al. [50] showed that the central retinal thickness was larger in CC carriers in comparison to CT/TT carriers, while we did not find any differences. *CYP4F2* is involved in 20-HETE metabolism and chronic inflammation. Studies investigating ophthalmic inflammatory diseases [58, 59] and age-related macular degeneration that has an inflammatory pathogenetic pathway [60] showed a significant capillary rarefaction in the affected patients. We hypothesise that TT (AA) genotype is related to more profound inflammatory response and decreased VascDen because of that. Hormel et al. stated that retinal vascular pathologies include mostly DCP changes, which could be also related to atherosclerosis as a widespread vascular pathology [57].

We compared the distribution of *ABCA1* (rs1883025) alleles between healthy, MI and 3VD groups and found no significant differences, like Fouladseresht et al. [61] where two groups (healthy and CAD) were compared.

When retinal and blood test results under various models were analysed, we found significant differences under dominant model of *ABCA1* rs1883025. CC allele carriers were shown to have thinner total as well as GCL+ and GCL++ retinal thickness and significantly larger foveal avascular zone. All the

forementioned results are in accordance with each other. SCP provides blood supply to the ganglion cell complex that consists of RNFL, GCL and inner plexiform layer representing different structures of ganglion cells [57]. We could hypothesise that increase in FAZ represents decreased blood supply to the ganglion cell complex thus causing decrease in GCL+ and GCL++ as well as total retinal thickness. A study performed by Mockute et al. [50] investigated central retinal thickness in control group and AMD patients and did not find any differences between *ABCA1* rs1883025 various alleles carriers. In an animal model study *ABCA1* was shown to be an important protein in lipid transport in retina. A mouse model lacking *ABCA1* and *ABCG1* showed lipid accumulation, retinal degeneration, and inflammation [36].

A study performed in Iranian population [61] found that the effect of *ABCA1* rs1883025 is only prominent in haplotype rs2422493/rs1800976/rs2230806/rs1883025 carriers, however we performed a binary logistic regression analysis and found that *ABCA1* rs1883025 CT genotype is associated with decreased risk for CAD development under overdominant genetic model. A Japanese study searching for genetic loci related to susceptibility to early onset CAD did not prove *ABCA1* rs1883025 to be related [62].

ABCA1 is a protein essential in intracellular cholesterol homeostasis and reverse cholesterol transport [36, 62, 63]. We compared the concentrations of cholesterol according to rs1883025 allele distribution and found higher Tg-C concentration in CC carriers and interestingly did not find any differences in other lipids including HDL-C concentrations. Do [64] showed that previously mentioned SNP is significantly related Tg-C and LDL-C but did not show risk to CAD. *Teslovich TM* investigated European population and found relation between rs1883025 HDL-C and total cholesterol [65]. Our study has limitations. The sample size for genetic analysis is rather small. The 3VD is significantly smaller than other groups included in the study. The initial enrolment of the participants was rather the same in all groups, however, 3VD group had significantly more comorbidities, such as stroke, diabetes, renal dysfunction, AMD, etc. resulting in their exclusion of the study.

CONCLUSIONS

ABCA1 rs1883025 was associated with retinal thickness. *CYP4F2* rs2108622 under recessive model (CC/CT vs. TT) may influence VascDen in DCP. *ABCA1* rs1883025 CT allele, retinal thickness and GCL+ may predict CAD. Results of this study confirmed that non-invasive methods such as OCT of eye might be used for identification of patients at risk of CAD. Large scale randomised studies are required to better understand the effect of biomarkers detected in this study.

Supplementary information is available at Eye's website

SUMMARY

What was known before:

- Cardiovascular diseases manifests with the structure of retinal vessels. However, the exact pathogenetic mechanism is not clearly described.
- ATP-binding cassette transporter A1 is crucial for reverse cholesterol transport and homeostasis. It promotes the efflux of cholesterol from cells, thus it has anti-inflammatory and antiatherogenic activity.
- *CYP4F2* is another important enzyme in metabolism of fatty acids. Alterations of *CYP4F2* activity may have a significant role in control of inflammation.

What this study adds:

- *ABCA1* rs1883025 CT allele, retinal thickness and GCL+ may predict CAD.
- *ABCA1* rs1883025 CC allele carriers have thinner total as well as GCL+ and GCL++ retinal thickness and significantly larger foveal avascular zone.

DATA AVAILABILITY

All data supporting the findings of this study are available within the paper and its Supplementary Information. Should any raw data files be needed they are available from the corresponding author upon reasonable request.

REFERENCES

1. Kraus H, Klenka L. [Correlation of sclerotic changes in the heart and findings on the eye ground blood vessels. (Results of the 1st stage in blood vessel research)]. *Sb Lek.* 1963;65:235–43.
2. Hiller R, Sperduto RD, Podgor MJ, Ferris FL, Wilson PWF. Diabetic retinopathy and cardiovascular disease in type II diabetics. The Framingham Heart Study and the Framingham Eye Study. *Am J Epidemiol.* 1988;128:402–9.
3. Miettinen H, Haffner SM, Lehto S, Rönnemaa T, Pyörälä K, Laakso M. Retinopathy predicts coronary heart disease events in NIDDM patients. *Diabetes Care.* 1996;19:1445–8.
4. Klein R, Klein BEK, Moss SE, Meuer SM. Retinal emboli and cardiovascular disease: the Beaver Dam Eye Study. *Arch Ophthalmol.* 2003;121:1446–51.
5. Michelson EL, Morganroth J, Nichols CW, Macvaugh H. Retinal arteriolar changes as an indicator of coronary artery disease. *Arch Intern Med.* 1979;139:1139–41.
6. Hannappe MA, Arnould L, Méloix A, Mouhat B, Bichat F, Zeller M, et al. Vascular density with optical coherence tomography angiography and systemic biomarkers in low and high cardiovascular risk patients. *Sci Rep.* 2020;10:1–9.
7. Allon R, Aronov M, Belkin M, Maor E, Shechter M, Fabian ID. Retinal microvascular signs as screening and prognostic factors for cardiac disease: a systematic review of current evidence. *Am J Med.* 2021;134:36–47.e7.
8. Cheung CY, Ikram MK, Chen C, Wong TY. Imaging retina to study dementia and stroke. *Prog Retin Eye Res.* 2017;57:89–107.
9. Guo S, Yin S, Tse G, Li G, Su L, Liu T. Association between caliber of retinal vessels and cardiovascular disease: a systematic review and meta-analysis. *Curr Atheroscler Rep.* 2020;22.
10. Roth GA, Mensah GA, Johnson CO, Addolorato G, Ammirati E, Baddour LM, et al. Global burden of cardiovascular diseases and risk factors, 1990–2019: update from the GBD 2019 study. *J Am Coll Cardiol.* 2020;76:2982–3021.
11. MacHalińska A, Kawa MP, Marlicz W, MacHaliński B. Complement system activation and endothelial dysfunction in patients with age-related macular degeneration (AMD): possible relationship between AMD and atherosclerosis. *Acta Ophthalmol.* 2012;90:695–703.
12. Gimbrone MA, Garcia-Cardeña G. Endothelial cell dysfunction and the pathobiology of atherosclerosis. *Circ Res.* 2016;118:620–36.
13. Linton MRF, Yancey PG, Davies SS, Jerome WG, Linton EF, Song WL et al. The Role of Lipids and Lipoproteins in Atherosclerosis. [Updated 2019 Jan 3]. In: Feingold KR, Anawalt B, Blackman MR, et al., editors. *Endotext* [Internet]. South Dartmouth (MA): MDText.com, Inc.; 2000-.
14. Lewandowski D, Sander CL, Tworak A, Gao F, Xu Q, Skowronska-Krawczyk D. Dynamic lipid turnover in photoreceptors and retinal pigment epithelium throughout life. *Prog Retin Eye Res.* 2022;89:101037.
15. Rocic P, Schwartzman ML. 20-HETE in the regulation of vascular and cardiac function. *Pharm Ther.* 2018;192:74–87.
16. Hoopes SL, Garcia V, Edin ML, Schwartzman ML, Zeldin DC. Vascular actions of 20-HETE. *Prostaglandins Other Lipid Mediat.* 2015;120:9–16.
17. Ishizuka T, Cheng J, Singh H, Vitto MD, Manthali VL, Falck JR, et al. 20-Hydroxyeicosatetraenoic acid stimulates nuclear factor-kappaB activation and the production of inflammatory cytokines in human endothelial cells. *J Pharm Exp Ther.* 2008;324:103–10.
18. Orozco LD, Liu H, Perkins E, Johnson DA, Chen BB, Fan F, et al. 20-Hydroxyeicosatetraenoic acid inhibition attenuates balloon injury-induced neointima formation and vascular remodeling in rat carotid arteries. *J Pharm Exp Ther.* 2013;346:67–74.

19. Hoff U, Lukitsch I, Chaykovska L, Ladwig M, Arnold C, Manthati VL, et al. Inhibition of 20-HETE synthesis and action protects the kidney from ischemia/reperfusion injury. *Kidney Int.* 2011;79:57–65.
20. Munshi A, Sharma V, Kaul S, Al-Hazzani A, Alshatwi AA, Shafi G, et al. Association of 1347 G/A cytochrome P450 4F2 (CYP4F2) gene variant with hypertension and stroke. *Mol Biol Rep.* 2012;39:1677–82.
21. Fu Z, Nakayama T, Sato N, Izumi Y, Kasamaki Y, Shindo A, et al. Haplotype-based case-control study of the human CYP4F2 gene and essential hypertension in Japanese subjects. *Hypertens Res.* 2008;31:1719–26.
22. Stec DE, Roman RJ, Flasch A, Rieder MJ. Functional polymorphism in human CYP4F2 decreases 20-HETE production. *Physiol Genomics.* 2007;30:74–81.
23. Ward NC, Tsai IJ, Barden A, van Bockxmeer FM, Puddey IB, Hodgson JM, et al. A single nucleotide polymorphism in the CYP4F2 but not CYP4A11 gene is associated with increased 20-HETE excretion and blood pressure. *Hypertension.* 2008;51:1393–8.
24. Fava C, Montagnana M, Almgren P, Rosberg L, Lippi G, Hedblad B, et al. The V433M variant of the CYP4F2 is associated with ischemic stroke in male Swedes beyond its effect on blood pressure. *Hypertension.* 2008;52:373–80.
25. Du XM, Kim MJ, Hou L, Le Goff W, Chapman MJ, Van Eck M, et al. HDL particle size is a critical determinant of ABCA1-mediated macrophage cellular cholesterol export. *Circ Res.* 2015;116:1133–42.
26. Chistiakov DA, Melnichenko AA, Myasoedova VA, Grechko AV, Orekhov AN. Mechanisms of foam cell formation in atherosclerosis. *J Mol Med (Berl).* 2017;95:1153–65.
27. Hutchins PM, Heinecke JW. Cholesterol efflux capacity, macrophage reverse cholesterol transport, and cardioprotective HDL. *Curr Opin Lipidol.* 2015;26:388.
28. Wang Y, Wang M, Han Y, Zhang R, Ma L. ABCA1 rs1883025 polymorphism and risk of age-related macular degeneration. *Graefes Arch Clin Exp Ophthalmol.* 2016;254:323–32.
29. Yin K, Liao DF, Tang CK. ATP-binding membrane cassette transporter A1 (ABCA1): a possible link between inflammation and reverse cholesterol transport. *Mol Med.* 2010;16:438–49.
30. Oram JF, Heinecke JW. ATP-binding cassette transporter A1: a cell cholesterol exporter that protects against cardiovascular disease. *Physiol Rev.* 2005;85:1343–72.
31. Kathiresan S, Willer CJ, Peloso GM, Demissie S, Musunuru K, Schadt EE, et al. Common variants at 30 loci contribute to polygenic dyslipidemia. *Nat Genet.* 2009;41:56–65.
32. Shukla H, Mason JL, Sabyah A. Identifying genetic markers associated with susceptibility to cardiovascular diseases. *Future Sci OA.* 2019;5:F5O350.
33. Nishida Y, Hachiya T, Hara M, Shimano C, Tanaka K, Sutoh Y, et al. The interaction between ABCA1 polymorphism and physical activity on the HDL-cholesterol levels in a Japanese population. *J Lipid Res.* 2019;61:86–94.
34. Yu Y, Reynolds R, Fagerness J, Rosner B, Daly MJ, Seddon JM. Association of variants in the LIPC and ABCA1 genes with intermediate and large drusen and advanced age-related macular degeneration. *Invest Ophthalmol Vis Sci.* 2011;52:4663–70.
35. Klein R, Myers CE, Buitendijk GH, Rochtchina E, Gao X, de Jong PT, et al. Lipids, lipid genes, and incident age-related macular degeneration: the three continent age-related macular degeneration consortium. *Am J Ophthalmol.* 2014;158:513–e3.
36. Storti F, Klee K, Todorova V, Steiner R, Othman A, van der Velde-Visser S, et al. Impaired ABCA1/ABCG1-mediated lipid efflux in the mouse retinal pigment epithelium (RPE) leads to retinal degeneration. *Elife.* 2019;8:e45100.
37. Rancho TM. Systemic retinal biomarkers. *Curr Opin Ophthalmol.* 2021;32:439–44.
38. Nhanes III (1988-1994) - Anthropometric Procedure Videos. <https://www.cdc.gov/nchs/nhanes/nhanes3/anthropometricvideos.aspx>.
39. Cantrill HL. The diabetic retinopathy study and the early treatment diabetic retinopathy study. *Int Ophthalmol Clin.* 1984;24:13–29.
40. Matulevičiūtė I, Sidaraitė A, Tatarūnas V, Veikūtienė A, Dobilienė O, Žaliūnienė D. Retinal and choroidal thinning-A predictor of coronary artery occlusion? *Diagnosics (Basel).* 2022;12:2016.
41. Khan MA, Hashim MJ, Mustafa H, Baniyas MY, Al Suwaidi SKBM, AlKatheeri R, et al. Global epidemiology of ischemic heart disease: results from the global burden of disease study. *Cureus.* 2020;12:e9349.
42. Scuderi G, Fragiotta S, Scuderi L, Iodice CM, Perdicchi A. Ganglion cell complex analysis in glaucoma patients: what can it tell us? *Eye Brain.* 2020;12:33–44.
43. Genevois O, Paques M, Simonutti M, Sercombe R, Seylaz J, Gaudric A, et al. Microvascular remodeling after occlusion-recanalization of a branch retinal vein in rats. *Invest Ophthalmol Vis Sci.* 2004;45:594–600.
44. Wang J, Jiang J, Zhang Y, Qian YW, Zhang JF, Wang ZL. Retinal and choroidal vascular changes in coronary heart disease: an optical coherence tomography angiography study. *Biomed Opt Express.* 2019;10:1532.
45. Neoh YL, Neoh PF, Salleh A, Yusof ZB, Gurusamy B, Ahmad Tajudin LS. Triple vessel coronary artery disease and retinal nerve fibre layer thickness. *Ann Acad Med Singap.* 2018;47:226–9.
46. Xie H, Pan Z, Xue CC, Chen D, Jonas JB, Wu X, et al. Clinical science Arterial hypertension and retinal layer thickness: the Beijing Eye Study. *Br J Ophthalmol.* 2022;0:1–7.
47. Weinreb RN, Aung T, Medeiros FA. The pathophysiology and treatment of glaucoma: a review. *JAMA.* 2014;311:1901–11.
48. Song X, Li P, Li Y, Yan X, Yuan L, Zhao C, et al. Strong association of glaucoma with atherosclerosis. *Sci Rep.* 2021;11:8792.
49. Sakiene R, Vilkeviciute A, Kriauciuniene L, Balciuniene VJ, Buteikiene D, Miniauskiene G, et al. CYP4F2 (rs2108622) gene polymorphism association with age-related macular degeneration. *Adv Med.* 2016;2016:1–9.
50. Mockute R, Vilkeviciute A, Balciuniene VJ, Zemaitiene R, Liutkeviciene R. ABCA1 rs1883025 and CYP4F2 rs2108622 gene polymorphism association with age-related macular degeneration and anti-VEGF Treatment. *Med.* 2021;57:974.
51. Dumitrescu L, Carty CL, Taylor K, Schumacher FR, Hindorf LA, Ambite JL, et al. Genetic determinants of lipid traits in diverse populations from the population architecture using genomics and epidemiology (PAGE) study. *PLoS Genet.* 2011;7:e1002138.
52. Major JM, Yu K, Wheeler W, Zhang H, Cornelis MC, Wright ME, et al. Genome-wide association study identifies three common variants associated with serologic response to vitamin E supplementation in men. *J Nutr.* 2012;142:866–71.
53. Al-Eitan LN, Almasri AY, Alnaamneh AH, Aman HA, Alrabadi NN, Khasawneh RH, et al. Influence of cyp4f2, apoe, and cyp2a6 gene polymorphisms on the variability of warfarin dosage requirements and susceptibility to cardiovascular disease in Jordan. *Int J Med Sci.* 2021;18:826–34.
54. Yu C, Yan Q, Fu C, Shi W, Wang H, Zeng C, et al. CYP4F2 genetic polymorphisms are associated with coronary heart disease in a Chinese population. *Lipids Health Dis.* 2014. <https://doi.org/10.1186/1476-511X-13-83>.
55. Zhang T, Yu K, Li X. Cytochrome P450 family 4 subfamily F member 2 (CYP4F2) rs1558139, rs2108622 polymorphisms and susceptibility to several cardiovascular and cerebrovascular diseases. *BMC Cardiovasc Disord.* 2018;18:1–10.
56. Geng H, Li B, Wang Y, Wang L. Association between the CYP4F2 Gene rs1558139 and rs2108622 polymorphisms and hypertension: a meta-analysis. *Genet Test Mol Biomark.* 2019;23:342–7.
57. Hormel TT, Jia Y, Jian Y, Hwang TS, Bailey ST, Pennesi ME, et al. Plexus-specific retinal vascular anatomy and pathologies as seen by projection-resolved optical coherence tomographic angiography. *Prog Retin Eye Res.* 2021;80:100878.
58. Shah A, Rao V, Verma A, Biswas J. Evaluation of change in the vascular density of choriocapillaris on optical coherence tomography angiography in eyes with serpigino choroiditis. *Indian J Ophthalmol.* 2020;68:1901–4.
59. Qu Y, Zhao C, Pei M, Liang A, Gao F, Zhang M. Anterior segment inflammation in pediatric uveitis is associated with reduced retinal vascular density as quantified by optical coherence tomography angiography. *Ocul Immunol Inflamm.* 2022;30:392–6.
60. Trinh M, Kalloniatis M, Nivison-Smith L. Vascular changes in intermediate age-related macular degeneration quantified using optical coherence tomography angiography. *Transl Vis Sci Technol.* 2019;8:20.
61. Fouladseresht H, Khazaei S, Javad Zibaeezhad M, Hossein Nikoo M, Khosropanah S, Doroudchi M. Association of ABCA1 haplotypes with coronary artery disease. *Lab Med.* 2020;51:157–68.
62. Yamada Y, Yasukochi Y, Kato K, Oguri M, Horibe H, Fujimaki T, et al. Identification of 26 novel loci that confer susceptibility to early-onset coronary artery disease in a Japanese population. *Biomed Rep.* 2018;9:383.
63. Wang J, Xiao Q, Wang L, Wang Y, Wang D, Ding H. Role of ABCA1 in cardiovascular disease. *J Personalized Med* 2022, Vol 12, Page 1010. 2022;12:1010.
64. Do R, Willer CJ, Schmidt EM, Sengupta S, Gao C, Peloso GM, et al. Common variants associated with plasma triglycerides and risk for coronary artery disease. *Nat Genet* 2013 45:11. 2013;45:1345–52.
65. Teslovich TM, Musunuru K, Smith AV, Edmondson AC, Stylianou IM, Koseki M, et al. Biological, clinical and population relevance of 95 loci for blood lipids. *Nature.* 2010;466:707–13.

AUTHOR CONTRIBUTIONS

Conceptualization – DŽ, VL, VT, methodology – I.M., DŽ, OD, investigation – IM, VS, IČ, AV, data analysis – IM, VS, IČ, AV, writing – original draught preparation – IM, writing – review and editing – VL, VT.

FUNDING

This work was supported in part by the Lithuanian University of Health Sciences.

COMPETING INTERESTS

The authors declare no competing interests.

ADDITIONAL INFORMATION

Supplementary information The online version contains supplementary material available at <https://doi.org/10.1038/s41433-023-02703-9>.

Correspondence and requests for materials should be addressed to Indrė Matulevičiūtė.

Reprints and permission information is available at <http://www.nature.com/reprints>

Publisher's note Springer Nature remains neutral with regard to jurisdictional claims in published maps and institutional affiliations.



Open Access This article is licensed under a Creative Commons Attribution 4.0 International License, which permits use, sharing, adaptation, distribution and reproduction in any medium or format, as long as you give appropriate credit to the original author(s) and the source, provide a link to the Creative Commons licence, and indicate if changes were made. The images or other third party material in this article are included in the article's Creative Commons licence, unless indicated otherwise in a credit line to the material. If material is not included in the article's Creative Commons licence and your intended use is not permitted by statutory regulation or exceeds the permitted use, you will need to obtain permission directly from the copyright holder. To view a copy of this licence, visit <http://creativecommons.org/licenses/by/4.0/>.

© The Author(s) 2023