

## CORRIGENDUM

doi:10.1038/nature15532

### Corrigendum: Cleavage of CAD inhibitor in CAD activation and DNA degradation during apoptosis

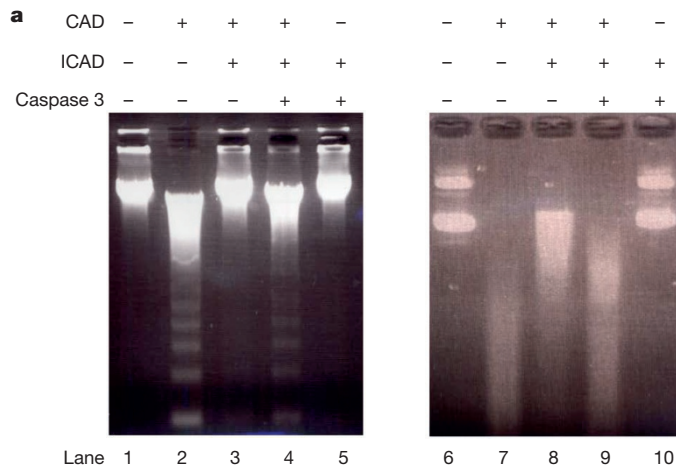
Hideki Sakahira, Masato Enari & Shigekazu Nagata

*Nature* **391**, 96–99 (1998); doi:10.1038/34214

Recently, it has come to our attention that in Fig. 1a of this Letter, lanes 1 and 5 appear to be duplicated and lanes 6 and 10 appear to be duplicated. It is unclear how this happened. We have repeated the experiment (see Fig. 1 of this Corrigendum) and the results were as described in the original Letter. The Supplementary Information to this Corrigendum contains the source data used to generate the corrected Fig. 1. Our conclusions are unaffected.

**Supplementary Information** is available in the online version of this Corrigendum.

**Correspondence** should be addressed to S.N. (snagata@ifrec.osaka-u.ac.jp).



**Figure 1** | This is the corrected Fig. 1a of the original Letter.